

Cadcorp is an Ordnance Survey<sup>®</sup> Developer Partner and an active member of the [Ordnance Survey Partner Programme](#). As such, we support organisations in gaining maximum value from Ordnance Survey (OS<sup>®</sup>) data. We work extensively with members of the [Public Sector Geospatial Agreement](#) (PSGA) to guide them in setting up, organising and managing their portfolio of Ordnance Survey data.

## About OS Open Zoomstack

[OS open data](#) products are a set of free digital maps of Great Britain, available for anyone to use, for any purpose.

OS Open Zoomstack (Zoomstack) is designed to make OS map data more accessible and easier to use. It provides a single, customisable map of Great Britain at national and local levels. It produces a feature-rich map that allows users to zoom in and out while being served high quality, fast-rendering map data.

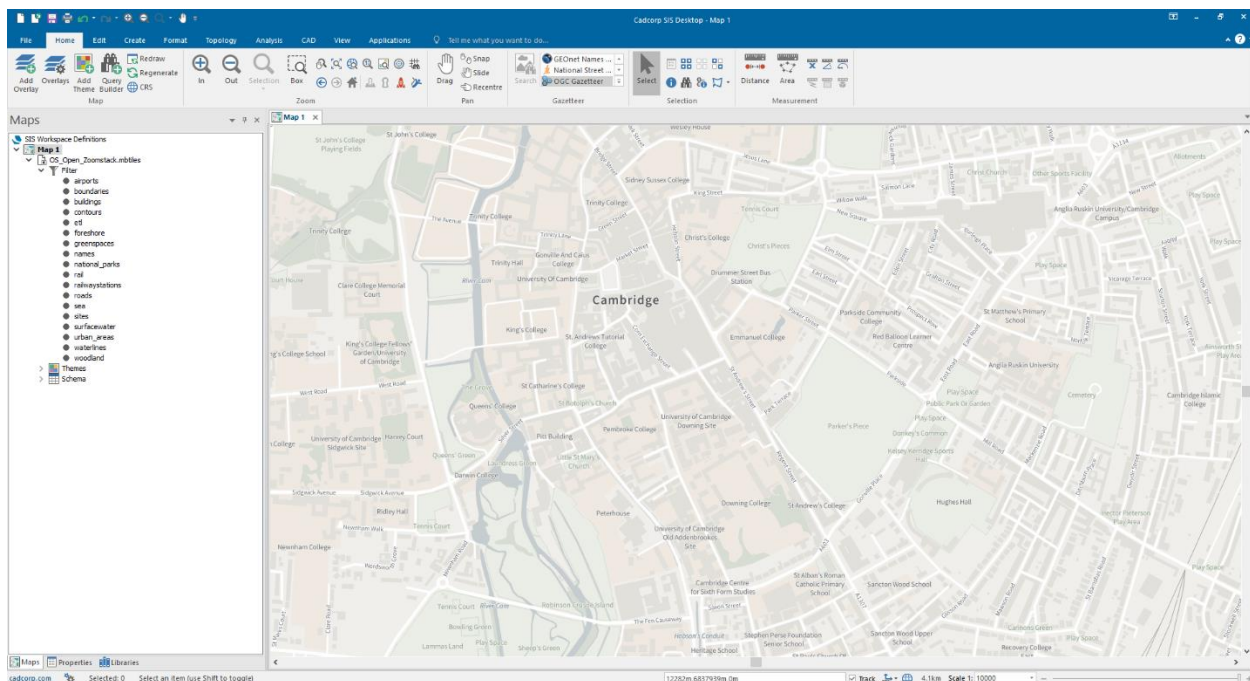
Zoomstack is supplied in GeoPackage and Vector Tiles (MBtiles) formats, which this guide will cover.

These instructions are based on [Cadcorp SIS Desktop 9](#), released in November 2018.

## Installing Zoomstack Vector Tiles in Cadcorp SIS Desktop

Cadcorp SIS Desktop can directly load the Vector Tiles data from a local MBTiles file.

1. Download the [Vector Tiles \(MBTiles\)](#), and the accompanying [Mapbox GL Styles](#). You will need the style files from the Mapbox GL Styles folder and the sprites.json and sprites.png files, from the *sprites* sub-folder. These files can be placed anywhere on your machine, as long as they are stored within the same folder
2. Rename one of the downloaded Mapbox GL Style files to *style.json* and place it, and the sprites.json and sprites.png files, alongside the downloaded MBTiles file (OS\_Open\_Zoomstack.mbtiles)
3. Open Cadcorp SIS Desktop
4. The easiest way to load the data is to simply drag-and-drop the MBTiles file into Cadcorp SIS Desktop
5. Because the tiles use the *WGS 84 Pseudo-Mercator* coordinate reference system the default extents are much bigger than GB, so you will have to zoom in

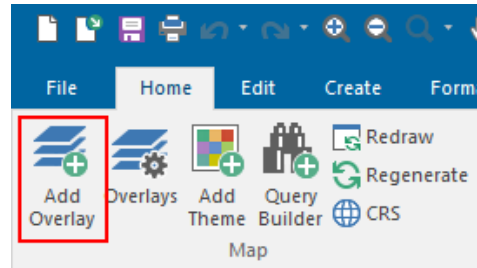


*Example view of Cambridge, using the Light style*

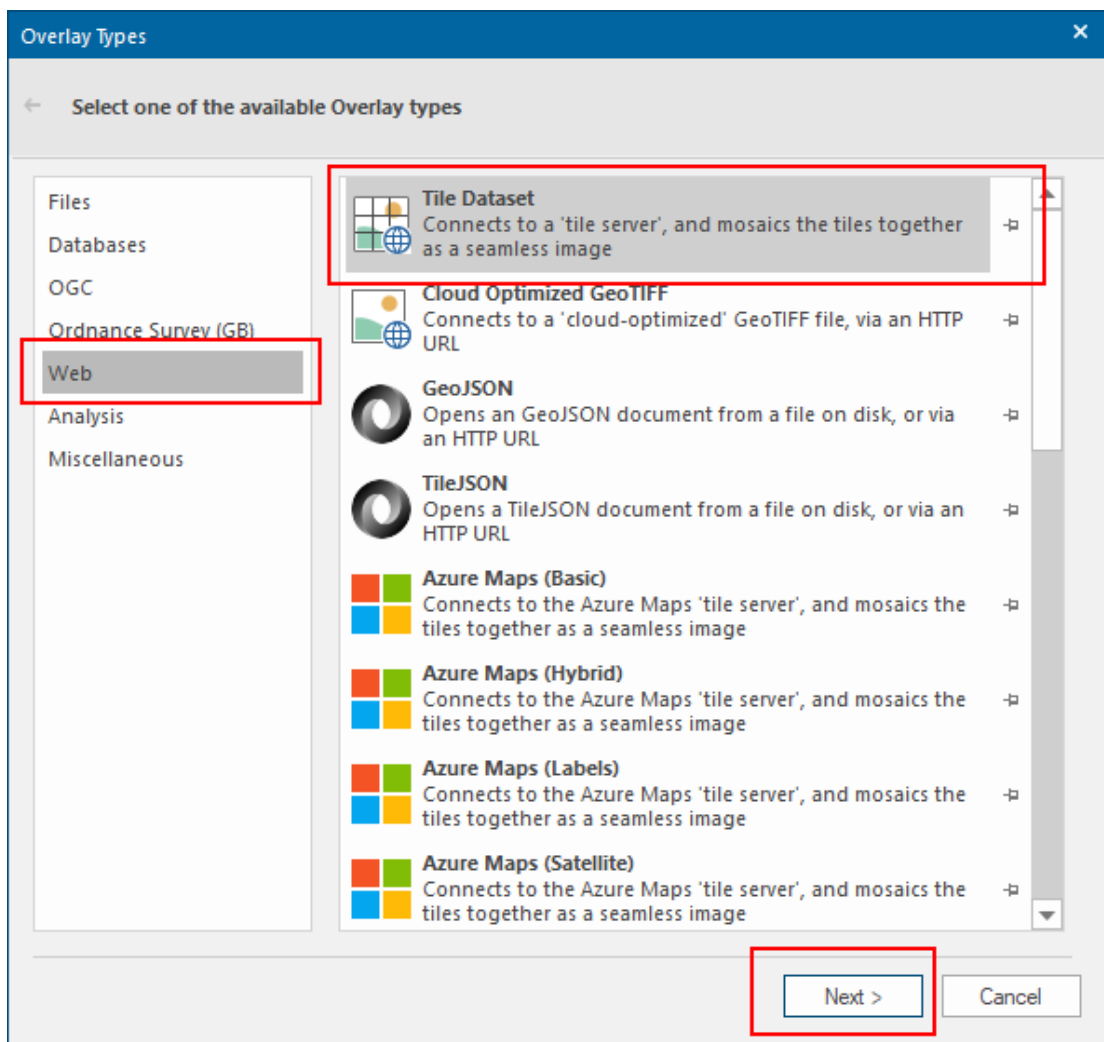
## Using OS Styles

Cadcorp SIS Desktop can remotely access the Vector Tiles data from the OS Amazon S3 server.

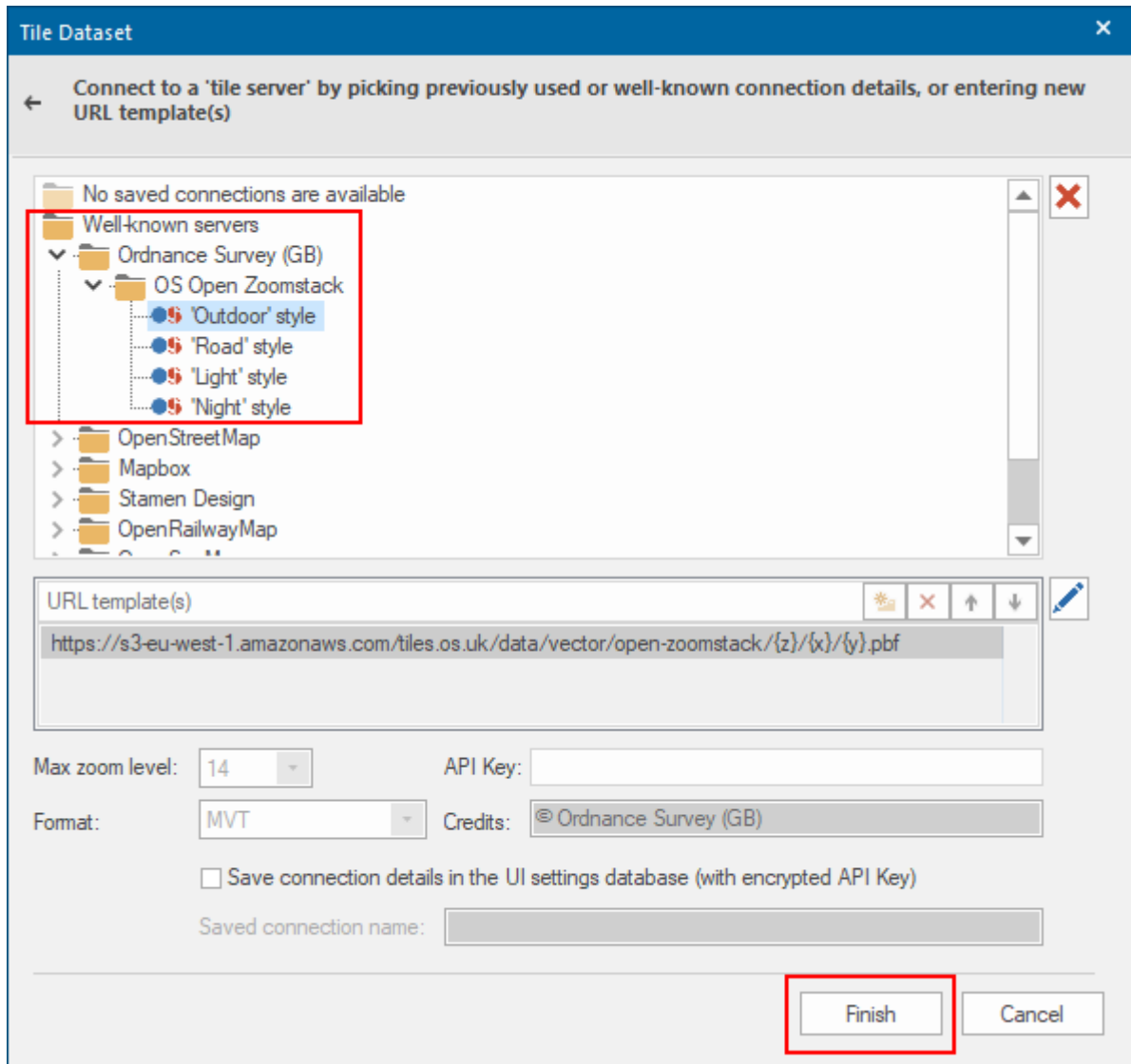
1. Open Cadcorp SIS Desktop
2. Click the **Add Overlay** button, in the Map group, on the Home tab



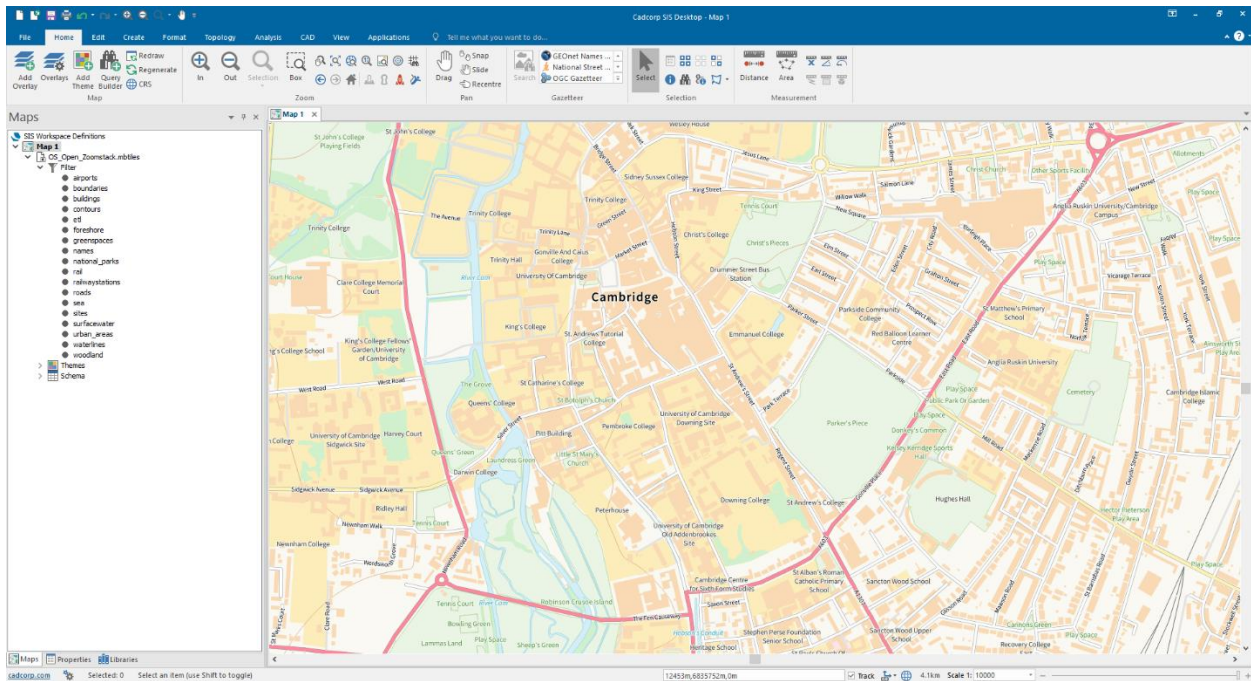
3. Select **Web**, then **Tile Dataset, Next**



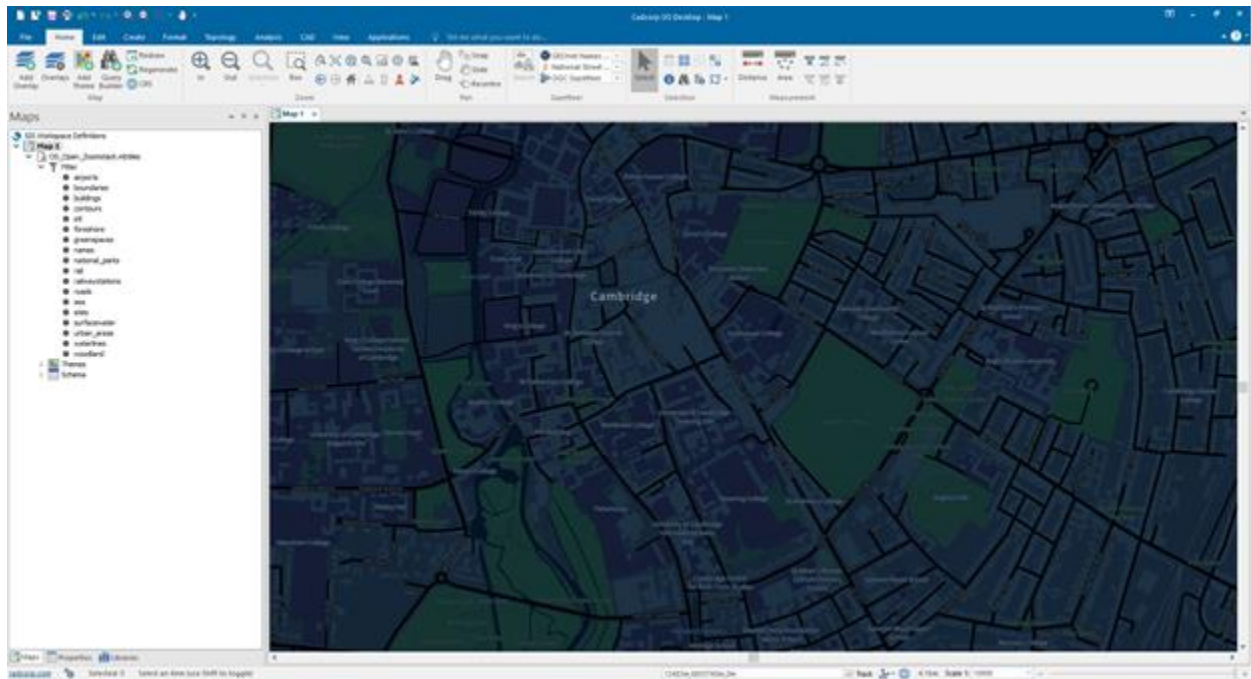
- Expand **Well-known servers** > **Ordnance Survey (GB)** > **OS Open Zoomstack** and select the OS Open Zoomstack style you want, **Finish**



- Because the tiles use the *WGS 84 Pseudo-Mercator* coordinate reference system, the default extents are much bigger than GB, so you will have to zoom in.



Example view of Cambridge, using 'Road' style

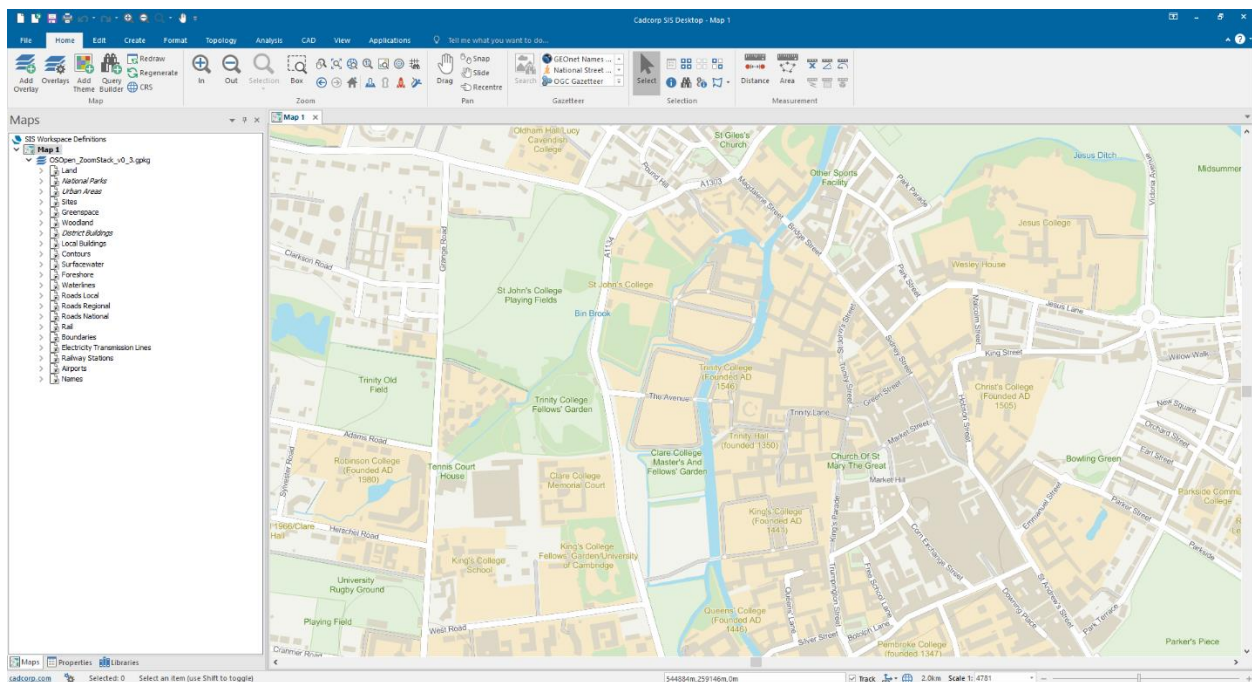


Example view of Cambridge, using 'Night' style

# Installing Zoomstack GeoPackage in Cadcorp SIS Desktop 9

GeoPackage is an open, standards-based, portable, platform-independent, compact format for transferring geospatial information. This allows Zoomstack to store geospatial data in a single file that is easy to distribute. It can hold large amounts of data and can support the different geometry types and indexes that make the data much easier to use. Quite simply, a Plug n Play format that works with a wide range of software implementations.

1. Download and unzip the [GeoPackage](#)
2. Open Cadcorp SIS Desktop
3. The easiest way to load the data is to simply drag-and-drop the unzipped GeoPackage (OS\_Open\_Zoomstack.gpkg) into Cadcorp SIS Desktop
4. Cadcorp SIS Desktop will automatically recognise the GeoPackage as OS Open Zoomstack, load the Zoomstack layers (known as *Overlays* in Cadcorp SIS Desktop) in the correct order for drawing, apply suitable scale thresholds to those Overlays, and also apply default styling to the Overlays, using the Outdoor style
5. Expanding the tree in the Maps control bar will show the loaded Overlays (those marked in *italics* are not visible in the current map view due to their scale-threshold)



Example view of Cambridge, using 'Outdoor' style