

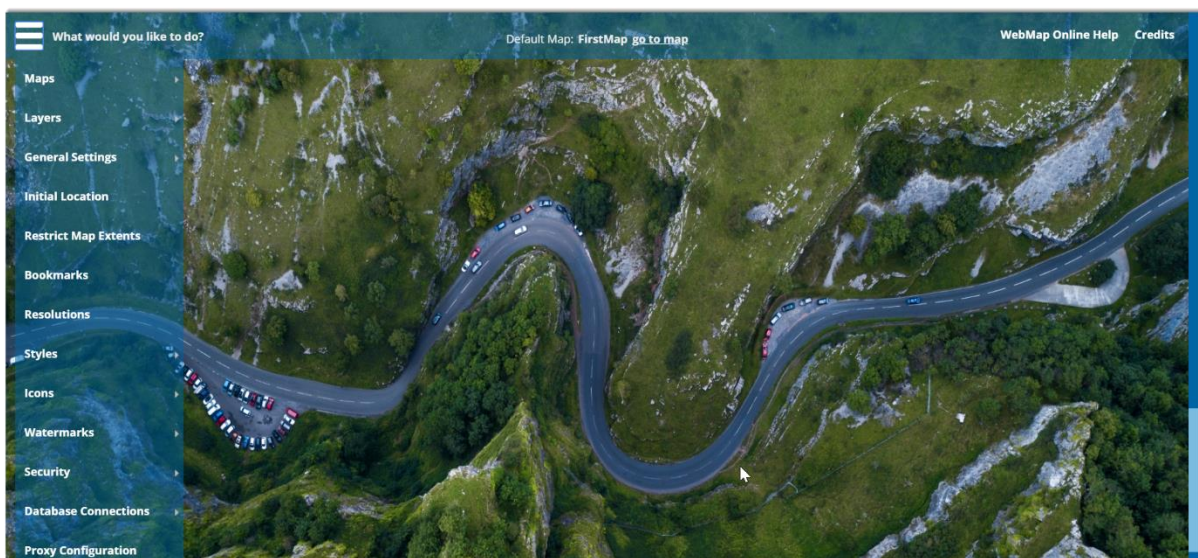
This guide demonstrates how to add the Aligned Assets SinglePoint Web Service to WebMap.

This helps users search for an address directly from their Local Land and Property Gazetteer web service.

Admin Interface

WebMap 9 includes a web-based Administrator interface; you can use this interface to create new maps, add Local Knowledge templates and even Gazetteer web services.

To edit Administrator settings, [open the URL](#) you have saved after installation.



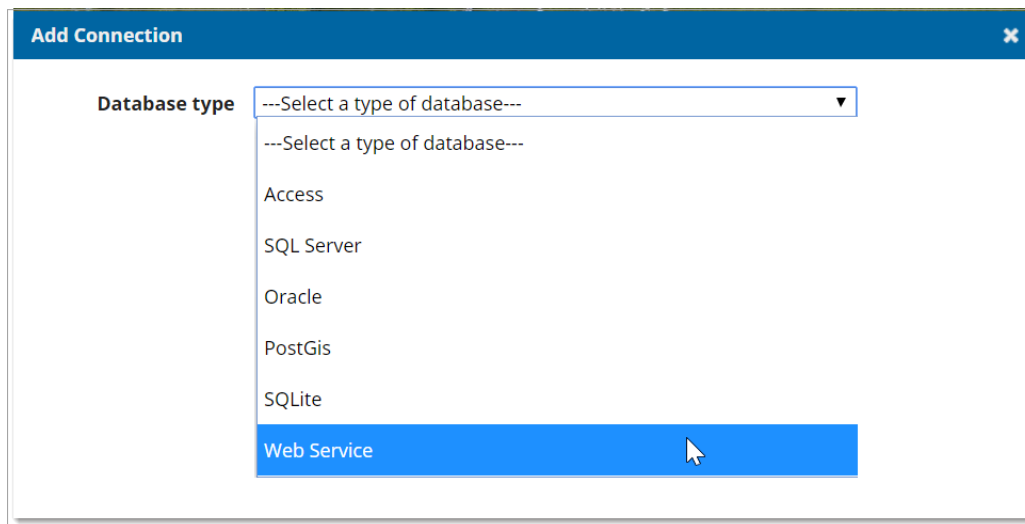
1. Adding the Database Connection

To use the Aligned Assets service, begin by adding a database connection. This instructs the system to search for addresses.

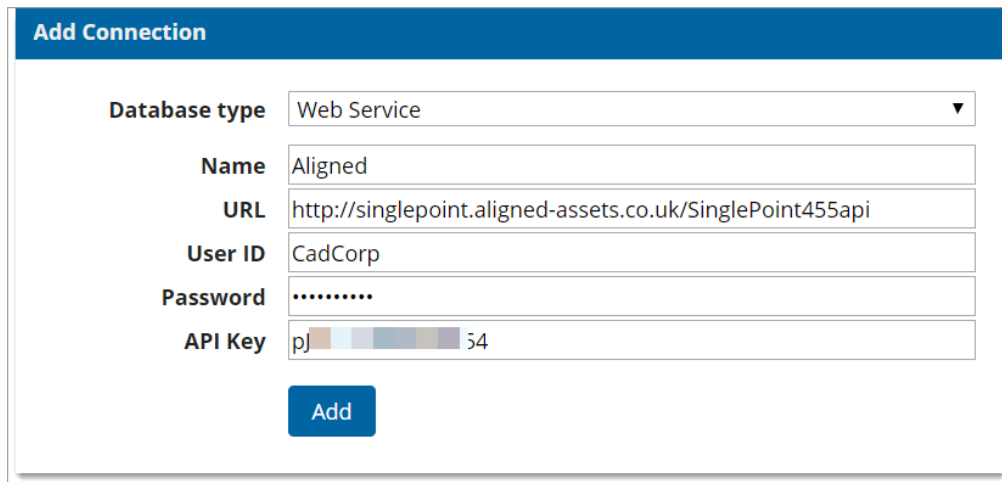
From the **“What would you like to do?”** drop-down select:

- **Database Connections > Add Connection**

We are looking at the Aligned Assets SinglePoint Web Service, so select **Web Service**:



This opens Web Service Settings:



Add Connection

Database type: Web Service

Name: Aligned

URL: http://singlepoint.aligned-assets.co.uk/SinglePoint455api

User ID: CadCorp

Password:

API Key: pJ 54

Add

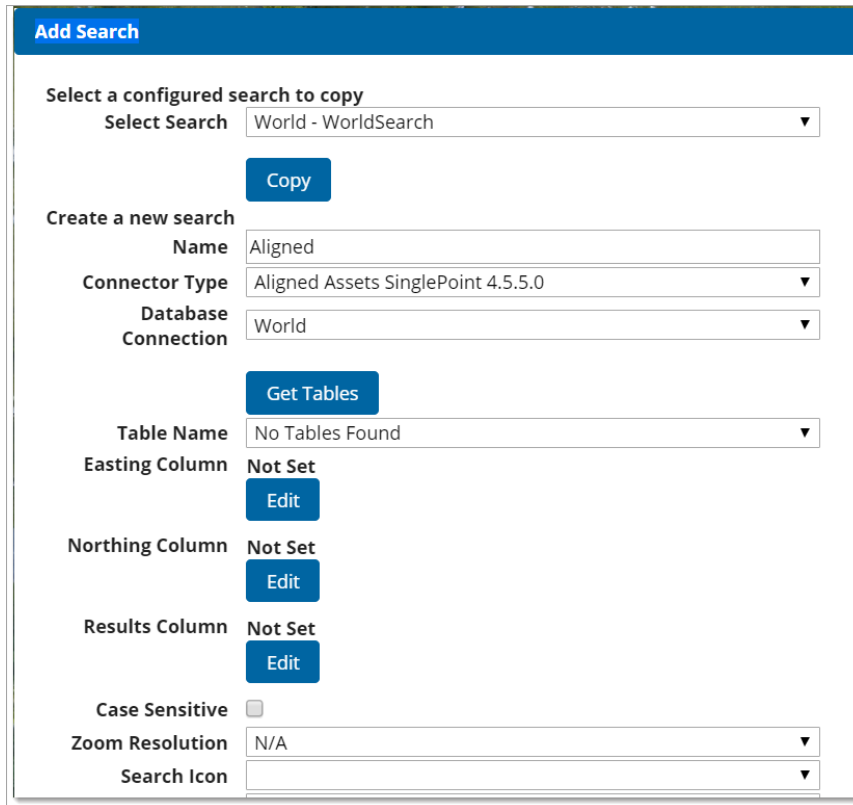
- **Name:** Choose a specific name for this web service. (In this example it's Aligned)
- **URL:** This will be your own web service provided by Aligned Assets
- **User ID:** UserID provided by Aligned Assets
- **Password:** Password provided by Aligned Assets
- **API Key:** Unique API Key provided by Aligned Assets (required only if you are using SinglePoint 4.5.5.0 or later.)

Click **Add**.

2. Adding a new search

After adding a database connection, you can begin creating a new search. Return to the WebMap admin interface and from the “**What would you like to do?**” drop-down select:

- **Searches > Add Search**



The screenshot shows the 'Add Search' form with the following fields and options:

- Select a configured search to copy:** A dropdown menu with 'World - WorldSearch' selected. Below it is a 'Copy' button.
- Create a new search:**
 - Name:** A text input field containing 'Aligned'.
 - Connector Type:** A dropdown menu with 'Aligned Assets SinglePoint 4.5.5.0' selected.
 - Database Connection:** A dropdown menu with 'World' selected.
 - Get Tables:** A blue button.
 - Table Name:** A dropdown menu with 'No Tables Found' selected.
 - Easting Column:** 'Not Set' with an 'Edit' button below it.
 - Northing Column:** 'Not Set' with an 'Edit' button below it.
 - Results Column:** 'Not Set' with an 'Edit' button below it.
 - Case Sensitive:** A checkbox that is currently unchecked.
 - Zoom Resolution:** A dropdown menu with 'N/A' selected.
 - Search Icon:** A dropdown menu.

- **Name:** Assign a relevant name to this database connection. In this example, it is Aligned.
- **Connector Type:** From the drop-down menu select either **Aligned Assets** or the updated version **Aligned Assets SinglePoint 4.5.5.0** (the newer version will require an API Key if enabled)
- **Database Connection:** The database connection configured in [Section 1](#) above.

Click **Get Tables** to see a list of tables and all relevant associated columns.

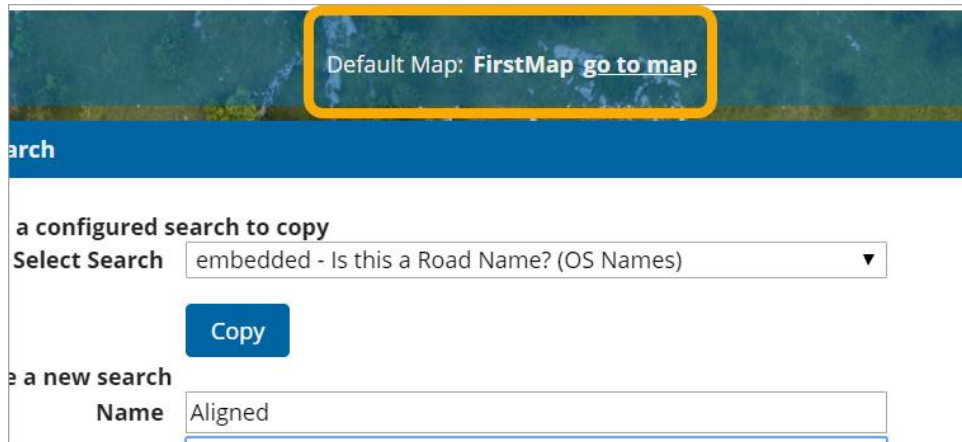
For example:

- **Table Name:** Addressbase
- **Easting Column:** Easting
- **Northing Column:** Northing
- **Results Column:** FULL_ADDRESS
- **Case Sensitive:** Check the box if you *want* it to be case sensitive. We have left it unchecked
- **Zoom Resolution:** Select the relevant resolution. E.g set it to 0.5 to zoom to MasterMap level
- **Icon:** Select an available icon.
- **Projection:** Will always be 27700
- **Search Columns:** SEARCH_ADDRESS
- **Order By Columns:** Can be left blank

Click **Add** and the gazetteer will be added to your selected map.

3. Search using Aligned Assets Web Service

Open the user map (click **Go to Map** at the top of the admin interface page)



The Aligned Assets Web Service is now available within the Quick Search box.

When you search for any relevant address or postcode for the area, the web service responds with results.

