



51°30'17"N 0°06'48"W

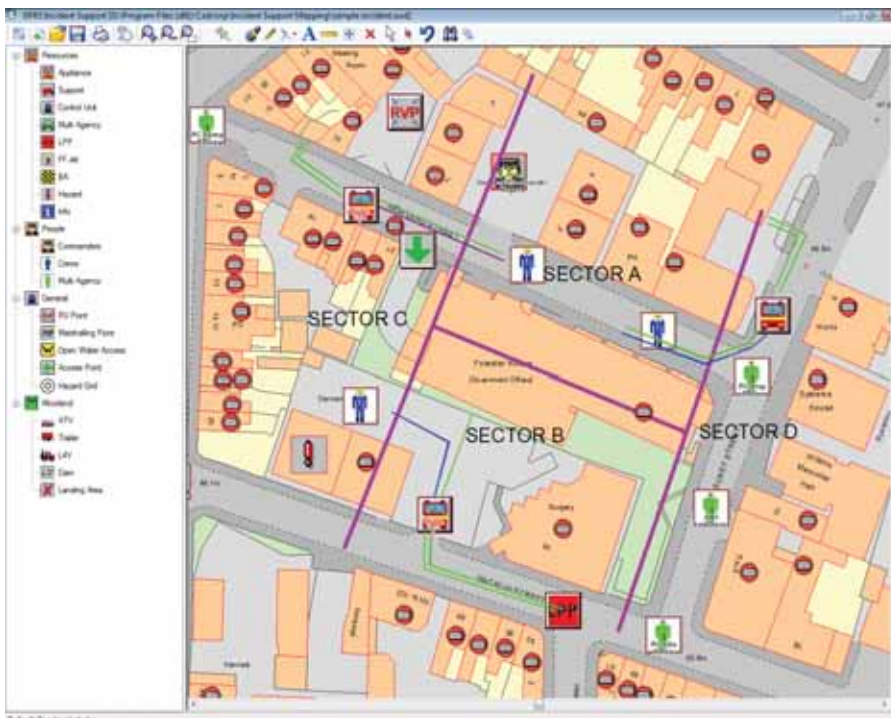
Fire Service Incident Support Mapping

Cadcorp's Incident Support Mapping System (ISMS) provides Fire Services with a stand-alone application to enable effective management of resources at major incidents through a simple and intuitive user interface. The system has been designed for 'usability'; whether manned by full-time or retained staff; the logical interface reduces the need for dedicated specialist users or complex training.

Cadcorp's ISMS allows the user to rapidly establish incident location using an in-built gazetteer and to quickly place the precise locations of resources in attendance to enable better decision making through the duration of an event.

Cadcorp's ISMS is in use with a number of UK Fire and Rescue Services. Benefits already identified from its use include :-

- Improved Resource Management
- Improved management of the incident ground
- The ability to quickly and easily position and update resources
- Rapid access to large-scale mapping together with the capability to easily integrate other data overlays.



Cadcorp's Incident Support Mapping System

Resource Allocation

Allocating critical resources according to established priorities is essential at any incident. Cadcorp's ISMS allows this to be done using a simple point and click interface, helping to maximize incident resources, improve personnel safety and coordinate the activities and location of other participating agencies. The efficient nature of the resource allocation interface enables resource locations to be quickly updated as an incident develops, keeping commanders informed of the situation and resource status.



Resource allocation using Cadcorp's ISMS

Data Integration

Built on the Cadcorp SIS – Spatial Information System software engine, which can read over 160 GIS formats, the Cadcorp ISMS can integrate a wide range of data from multiple sources. Integrating data sources such as gas main locations, hydrants, access points, hazardous materials and building plans helps improve incident management planning and overall safety for those in attendance.

Sector, Cordon and Hazard Grid tools

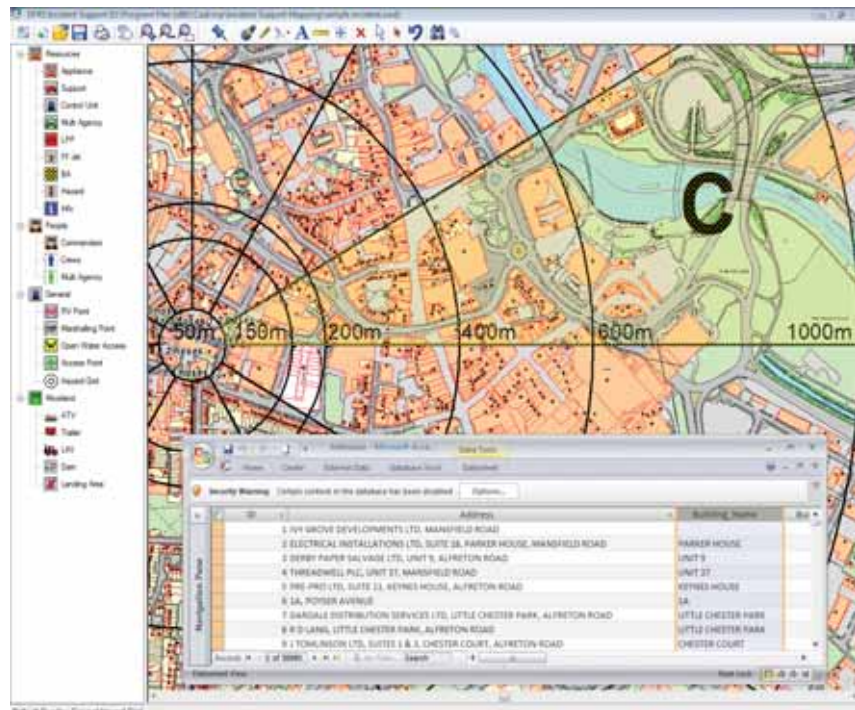
The purpose of dividing an incident into sectors is to give responders a common method of identifying key tactical locations within a fire incident location, ensuring effective communications between different agencies attending the scene. Cadcorp's ISMS has built-in tools to divide a scene into sectors and allocate sector names.

The Cordon Tool allows the incident commander to establish secure areas at set distances from the danger zone. This can be used for responder safety and also for generating lists of addresses for evacuation purposes - for example a list of all addresses within 200m of the incident can be created automatically.

A Hazard Grid can be added to the incident scene which replicates the grid used by FireNet, a service giving fire services almost instant access to highly accurate Met Office weather forecasts and in particular to denote wind patterns. This grid enables commanders to safely evacuate residents and responders based upon up-to-date weather information and to also route responders to an incident without encountering a potentially hazardous plume.

Cadcorp's Incident Support Mapping System functionality includes :-

- In built Gazetteer
- Incident Allocation
- Hoseline Creation and Measurement
- FireNet Hazard Grid
- Address selection and export
- Cordon creation
- Sector Lines and Label tools
- Reads 160+_CAD, GIS and Raster data formats
- Save Incident History
- Print Hardcopy Plans



FireNet Hazard Grid and Address export



Cadcorp | Computer Aided Development Corporation Ltd
 Sterling Court, Norton Road, Stevenage, Hertfordshire.
 SG1 2JY. UK
 T 01438 747996 | F 01438 747997

Cadcorp Inc. | North America
 1420 Boston-Providence Hwy, Suite #257, Norwood,
 MA 02062 USA
 T +1 (781) 551 2727 | F +1 (781) 551 3404

Visit www.cadcorp.com | Email cadcorp@cadcorp.com
 Cadcorp is a trading name of Computer Aided Development Corporation Ltd