



53°00'30"N 1°09'20"W

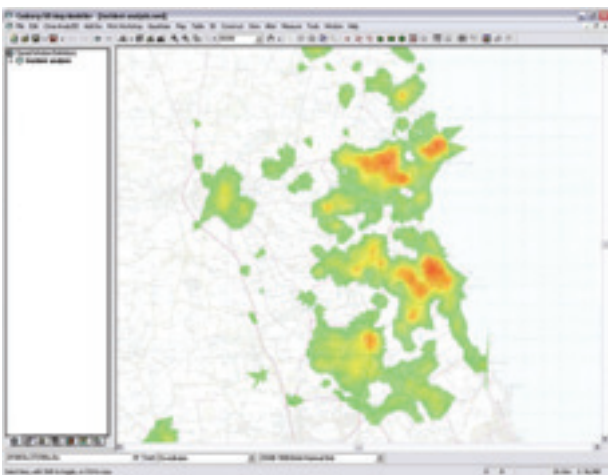
Crime Analysis ToolKit

Cadcorp's Crime Analysis ToolKit has been developed to support Crime Analysts in accurately and efficiently carrying out a range of spatial analysis tasks. The ToolKit is used alongside the Cadcorp SIS® – Spatial Information System® ("Cadcorp SIS") product suite. Cadcorp SIS is already used extensively by Police Forces and other emergency services both in the UK and overseas.

Cadcorp SIS is an integrated and complete family of desktop, web, developer and mobile GIS products. With a common GIS engine at the core, all Cadcorp SIS products work in the same way, sharing functionality and benefiting from the following:

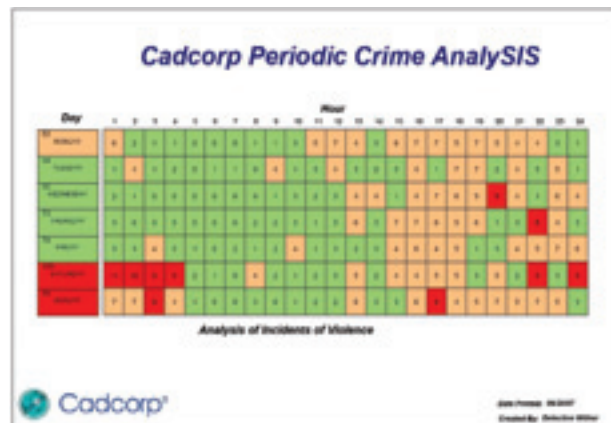
- Read and/or write over 150 data formats 'out-of-the-box' without translation
- Require no middleware to access databases
- Contain OGC compliant interfaces throughout
- Are fully interoperable
- Offer significant ease of use
- Are easy to customise using standard development tools
- Are proven in implementations worldwide

The Crime Analysis ToolKit comprises a range of analytical tools to support Crime Analysts in their challenging role.



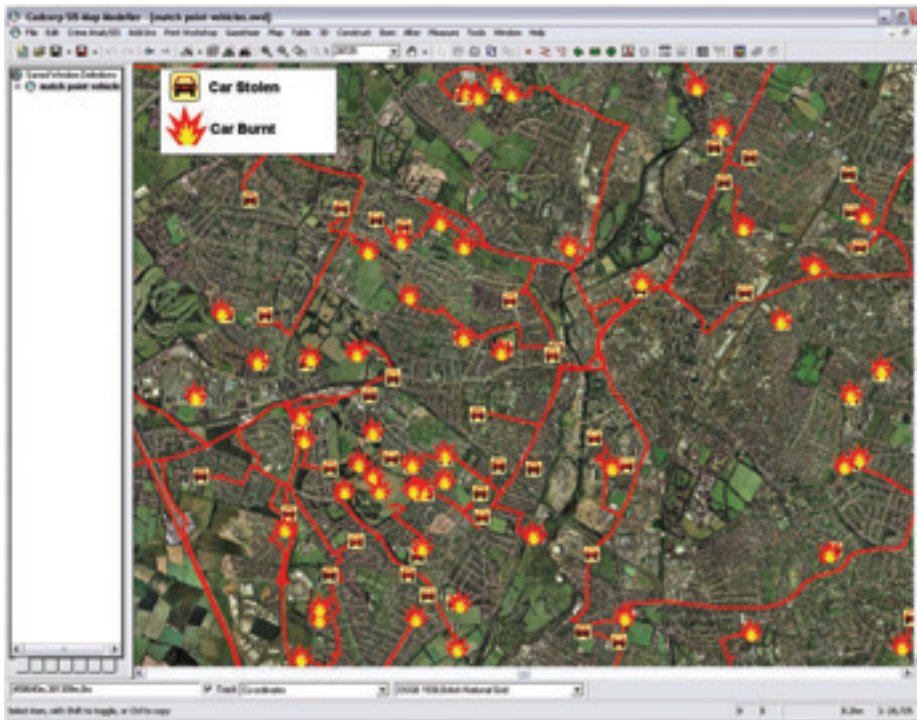
Hotspot Mapping

- Create "hotspot maps" of incidents to indicate high crime areas
- Use in association with the "Query Builder" tool for advanced analysis



Periodic Charting

- Create weekly or annual charts plotting the number of incidents which occurred throughout the day
- The "Query Builder" tool enables filtering of the type of incidents to be analysed



Routing Tools

- Find Nearest
- Isochrones
- Match Points (relate location of theft to location of recovered property, e.g. cars)
- Multi-point routing
- Route Directions

i2 iBase Integration

- Automatically displays iBase events on the map
- Enable events to be selected on the map and passed back to iBase for further analysis

