

UPDATE FOR EMERGENCY SERVICES

Richard Barker

Content

- 1. Intro to PSGA & Geospatial Commission**
- 2. Consultancy & Technical Services and Collaboration**
- 3. Protection of Life Segment & Emergency Service Gazetteer**
- 4. Vernacular Names in ESG**
- 5. National Geographic Database**
- 6. Projects & Partnerships**
- 7. Mapping for Emergencies**

INTRO TO PSGA AND GEOSPATIAL COMMISSION

Introduction to the Public Sector Geospatial Agreement

The PSGA sets out how OS provides **world-leading location expertise** to the public sector, OS Partners and developers across Britain – to support the delivery of critical infrastructure and services – from blue lights to streetlights.

The agreement builds on what we currently offer, with:

New, richer data

New ways to access data

New freedoms to share data



**Geospatial
Commission**

OS is developing new PSGA data and services in partnership with the Geospatial Commission User Expert Panel, PSGA Members and OS Partners to make sure they meet user needs and provide the best possible user experience.

[About the Geospatial Commission](#)

CONSULTANCY & TECHNICAL SERVICES

Consultancy & Technical Services for PSGA Support

5 levels of technical support:

- 1. Getting started with the PSGA**
- 2. Using OS data and services (across all software & platforms)**
- 3. Maximising the value of OS Data**
- 4. Embedding OS technical expertise into your organisation**
- 5. Provision of expert scientific advice**

Please contact me if you aren't aware who your OS Technical Contact is.

If you are our Primary contact who isn't a Practitioner please make your Practitioner/s aware of our support please.

My Recent Collaboration

- ***South Yorkshire Fire & Rescue Service***

Maps API for Incident Recording System (IRS). Migration from On Demand to Maps API

- ***Cheshire Police***

OS Highways Clinic. A detailed run through of our Highways Product

- ***West Yorkshire Police***

Splitting USRN line geometry to create locality gazetteer points

- ***West Yorkshire Fire***

Helped set up a Contractor Licence so they could embed Maps API in their Website using Leaflet

PROTECTION OF LIFE SEGMENT & EMERGENCY SERVICE GAZETTEER

The PSGA Protection of Life Segment

This segment covers Police, Fire, Ambulance & Defence & Security

*To support emergency services and other government agencies with the responsibility for **preparing, preventing and mitigating for potential events of concern to public safety and responding to emergency incidents.***

Protection of Life value-based outcomes

Working collaboratively across agencies to improve outcomes

Protect vulnerable citizens and communities from harm

Better value for money for taxpayers

Effective planning to reduce risk, loss of life and property

Increase efficiency and effectiveness of services provided

Increasing community engagement and cohesion

Improved shared situational awareness

Improve speed and efficiency of response

Emergency Services Gazetteer

Vision

A comprehensive and maintained gazetteer of the location of names and places can reduce the time taken to locate and respond to an emergency, making it easier for locations to be shared between services and enable incidents to be reliably recorded against their location for reporting and analysis purposes.

- Starting point for non-addressable features
- Collaboration with Emergency Services working group
- Authoritative dataset with persistent identifiers which can be maintained & shared

ESG Proposal - Features

As part of the working group OS are exploring adding the following:

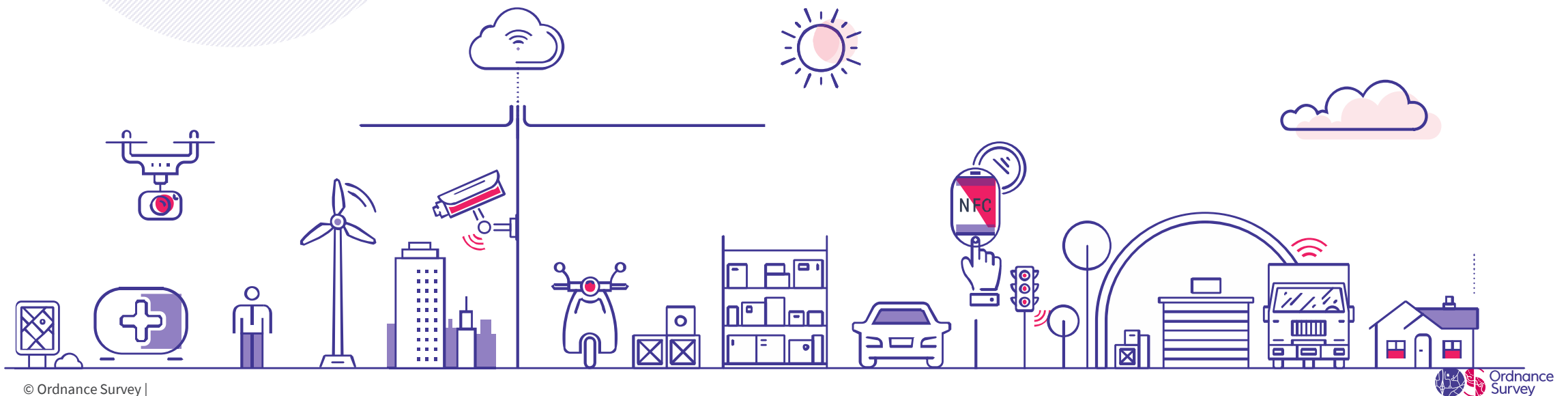
- Bridges
- Motorway Marker Posts
- Motorway Emergency Phones
- Coastal Emergency Phones
- Names & Numbers of Junctions
- Roundabout Names
- Named locations (i.e. Wood, Hill)
- Non-Addressable features
- *Vernacular Names*
- *Access to Rail*

VERNACULAR NAMES WITHIN ESG

What are our customers' use cases?

Protection of life

- Understanding local/vernacular place names without local knowledge
- Easier location of incidents
- Quicker emergency response
- More accurate reporting of incidents



Vernacular Names – User Requirements

- **Simple to use**
- **Simple data structure**
- **Points and Polygons**
- **Ability to add vernacular/alternative names on anything, as incident can happen anywhere**
- **Ability to add different Vernacular Names to the same feature**
- **Users will need to have a view of all uploaded data**

Important Non Addressable Features – User Feedback

- Car Parks
- Waterways infrastructure including weirs, mills, sluices
- Locks on rivers and canals
- Footbridges
- Subways
- Bus shelters
- Ponds
- Telephone kiosks
- Memorials, statues, fountains, obelisks, historic and commemorative monuments
- Public conveniences
- Railway tunnel portals
- Marinas, harbours and ports
- Named caves and potholes
- Pumping Stations/Water Towers

ESG Proposal

Attributes

- Unique Identifiers
- Third Party Identifiers e.g. Marker Post
- OS Identifiers (cross-reference)
- Alternative Language (*where applicable*)

Data Model

- One single flat file
- AddressBase Premium format (v0.2)
- Will be able to be loaded into same environment as ABP

Supply Format

- CSV
- Geopackage

NATIONAL GEOGRAPHIC DATABASE

National Geographic Database

Customers will have direct access to the National Geographic Database.

A Single curated Database with improved data structure (for analysis) and increased currency and metadata

It will be composed of Themes, Collections, Feature Types and Features

- **2 x APIs** (Product Names TBD)
- **OS Select + Build** - a brand new download service where customers can select the data they want and build their own data packages. 'Recipes' can be bespoke and offer better insights. If we share these recipes then the whole process becomes more valuable to the users.

e.g. **Building Geometry** + **Address/Class** + **Height** in one place – removing the need to join in a GIS or Database

PROJECTS & PARTNERSHIPS

Projects & Partnerships

NFCC - Community Risk Programme, [Definition of Risk](#)

NFCC - Safelincs, [Online Home Fire Safety Check](#)

NHS England Fire Risk by UPRN

Hampshire 999 Services Frequent Caller Proof of Concept

Home Office to support an embedded program within the Crime and Policing Analysis Unit (CPAU) where we will help create a shared digital data warehouse

Local Resilience Forums – A collective of OS Data end users – good for collaboration

HMICFRS – I believe the adoption and use of PSGA data could/should form part of the audit.

MAPPING FOR EMERGENCIES

Mapping for Emergencies (MfE) Support

Primarily aimed at **Category 1** (*emergency services, local authorities and NHS bodies*) and **Category 2** (*the Health and Safety Executive, transport and utility companies*) responders.

The service provides geospatial support during any emergency or major incident, all under the **Civil Contingencies Act 2004**.

Outputs can be delivered in a range of formats, for example as data that can be re-used for later analysis.

It can be loaded into common information sharing platforms, or as finished graphics which can be used within presentations or situation reports.

Funded by GC as part of PSGA

24 hours a day

365 days a year

Call: 03456 050505. We're here to help.

When to trigger a Mapping for Emergency call?

In an emergency, the triggers for whether to call on the MfE service need to be along the following lines:

- Is it an emergency?
- Is what you are asking MfE for a '**must**' or '**need**', as opposed to a 'should' or 'nice to have'?
- Is it something you do not have the capability to achieve with your current resources – because of lack of skills, data or hardware like plotting, etc.?
- Is it something you do not have the capacity to achieve with your current resources – because all of your staff are currently working on the emergency and you have no-one left?

Call: 03456 050505. We're here to help.

MfE Support

This support is delivered by OS's expert analysts, specifically trained in resilience, and can be provided remotely and/or at your location. We've responded to previous MfE requests with the following support:

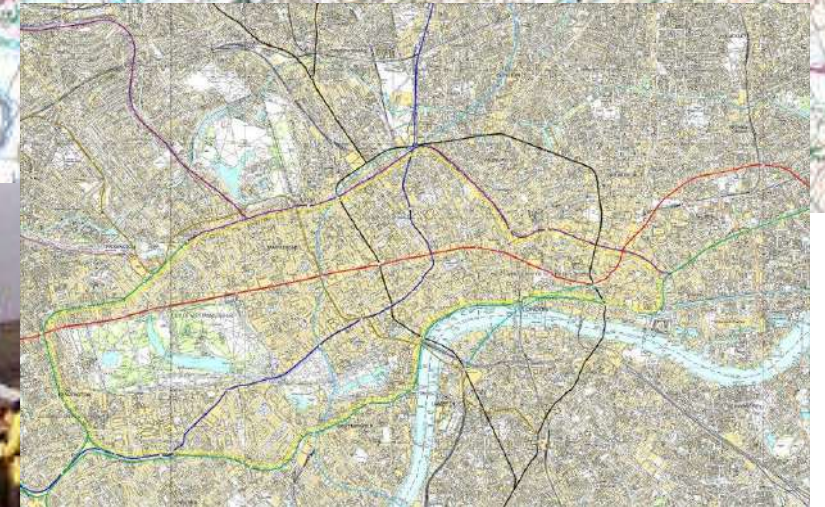
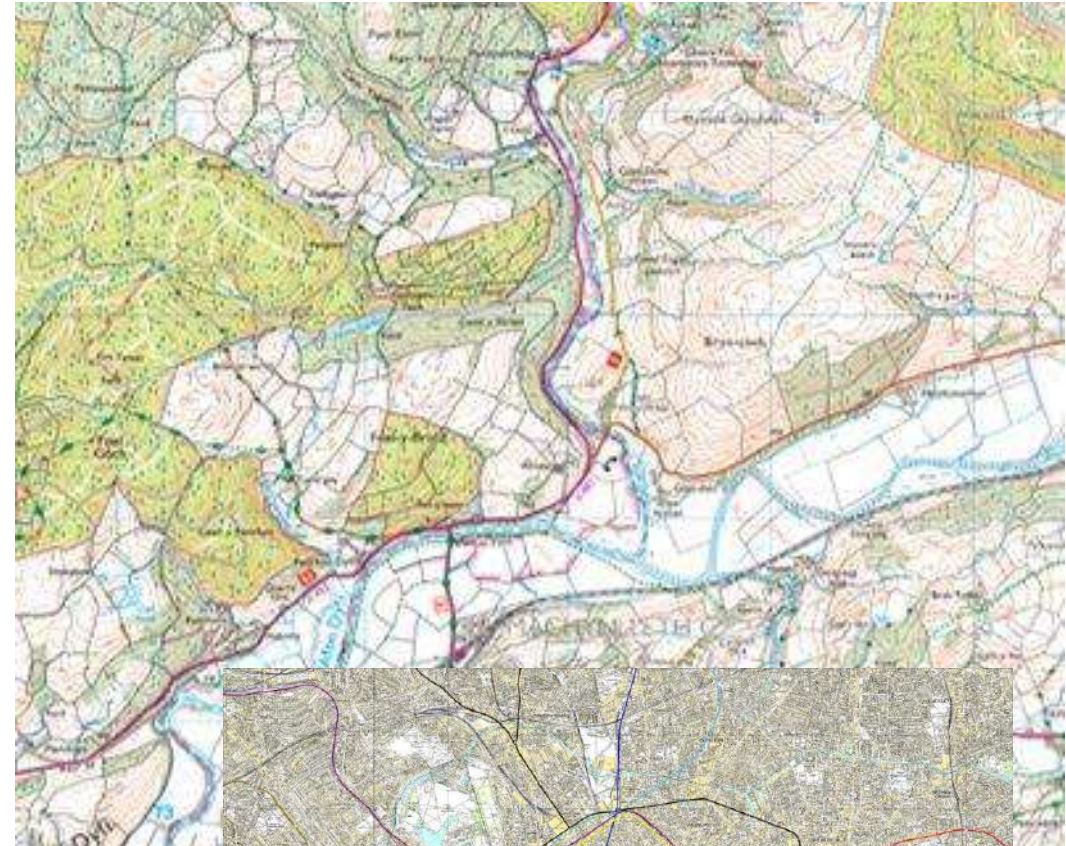
- Geospatial analysis (address matching/querying, routing, cordon analysis, geo-location)
- Data manipulation and custom formatting
- Bespoke mapping
- Large-volume map printing
- Geo-visualisation
- Situational awareness

Call: 03456 050505. We're here to help.

Past MfE support

Major memorable or high profile MFE incidents

- Severe flooding – Thames & Somerset Levels, Carlisle & Cockermouth
- Murder investigations – Soham murders, Millie Dowler, April Jones
- Missing persons & escaped convicts
- London bombings – 7/7, 2007 London car bombs
- Air Accident Investigation – Shetland Helicopter crash, Kegworth, Lockerbie
- Foot and mouth – 2001 and 2007
- H1N1 Pandemic -
- Rail disasters - Selby



THANK YOU

Richard Barker

richard.barker@os.uk



SEE > BETTER PLACE