



LEICESTERSHIRE

FIRE and RESCUE SERVICE



Risk and Response Times

Hiren Patel

Analyst

Cadcorp Emergency Services Conference

25th January 2017

protecting our communities

Background

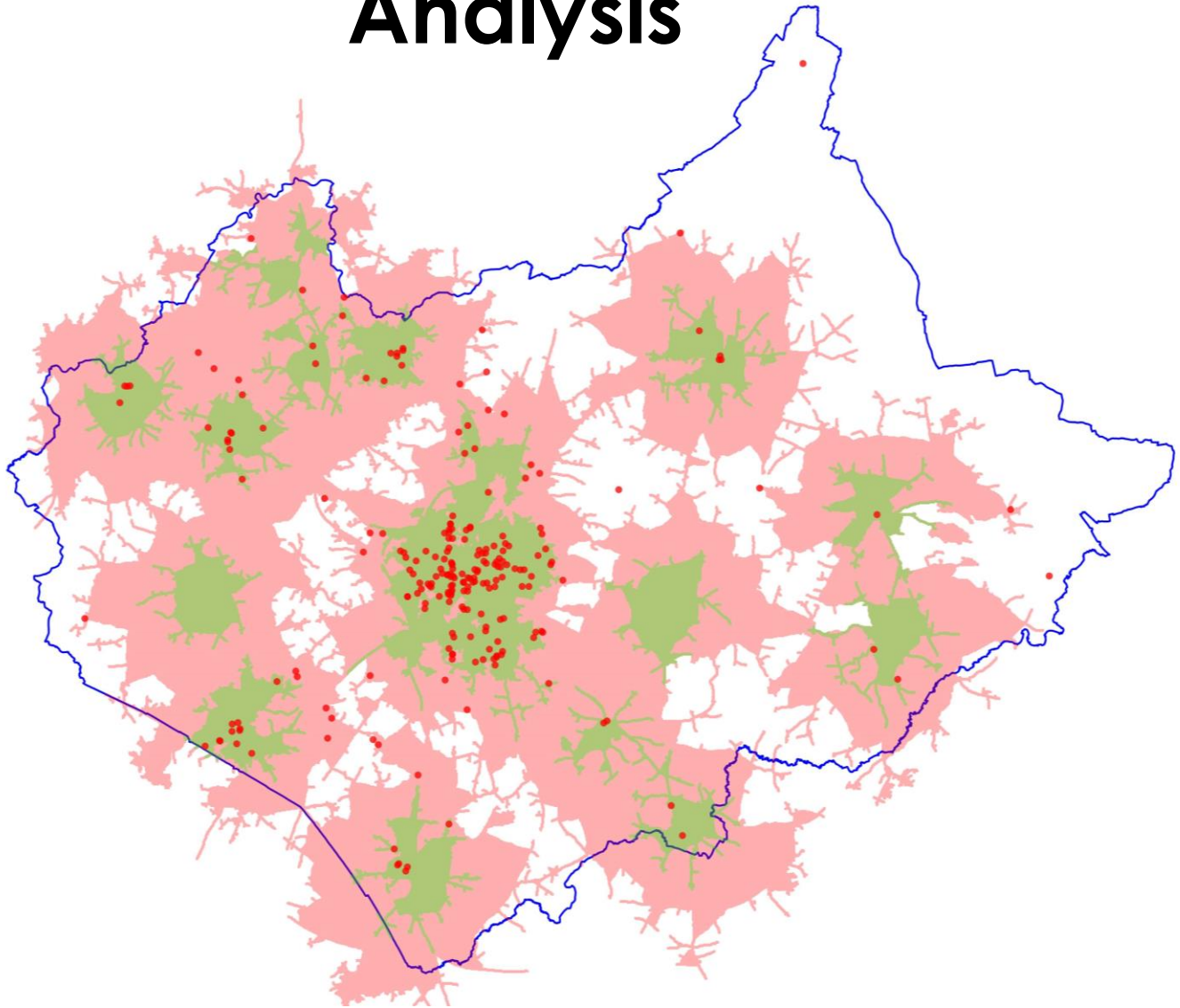
- In 2015 all FRSs received the 'Exeter' dataset
- In Leicestershire this dataset contained over 200k records
- Our capacity is around 10k Home Safety Visits per year



Risk Factors in Older People Fires

Risk Factor	DATA
Older Person	Y
Sex	Y
Lone Person Household	Y – predicted
Smoker	Y – predicted
Alcohol (excessive)	Y – predicted
Social Housing	Y
Disability or Limited Mobility	N
Dementia	N
Response Time(?)	Y

Analysis



protecting our communities

Results

Response Time	Population	Population %	Fire Casualties	Fire Casualties %	Risk
5 Min	742,697	71%	194	83%	117%
10 Min	273,196	26%	36	15%	59%
>10 Min	27,687	3%	3	1%	49%
Total	1,043,580	100%	233	100%	100%