
1. What is a Web Map Tile Service?

A Web Map Tile Service (WMTS) is an Open Geospatial Consortium (OGC[®]) standard for distributing pre-rendered, georeferenced map tiles over the Internet.

Why use a WMTS?

- A WMTS is used for serving base mapping to a number of people within an organisation, simply by connecting via a URL
- This allows many people to access a large number of topographic base maps easily to use as the basis of their desktop GIS analysis

There are four steps to creating a WMTS in Cadcorp SIS:

- Run the Cadcorp OGC CGI Servers installation
- Add base maps and create scale thresholds, within a SIS Workspace Document
- Publishing the SIS Workspace Document to a WMTS, using GeognoSIS Manager
- Add the newly created WMTS into a SIS Workspace Document

2. Cadcorp OGC CGI Servers installation

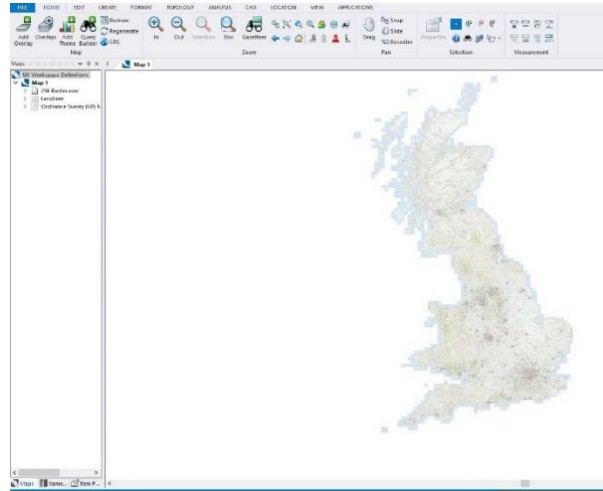
- Run the Cadcorp installation package that create the OGC services you want to use, namely WMS, WFS, WMTS or CSW

https://help.cadcorp.com/en/8.0/geognosis/manager/#Programming_GeognoSIS_OGC_servers.html#CGI2

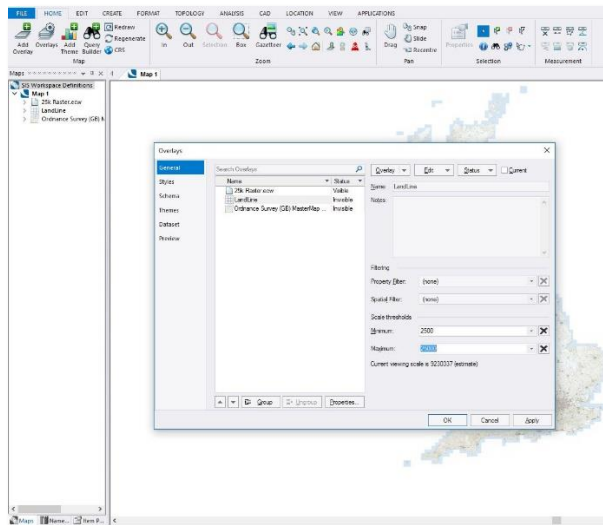
The Cadcorp installer automatically creates the IIS settings required for serving web services

3. Within Cadcorp SIS: Add base maps and create scale thresholds

- Open a Cadcorp SIS Workspace Document (SWD)
Add various levels of base mapping (in this example OS 1:25,000 Raster, OS StreetView and OS MasterMap Topography Layer®)



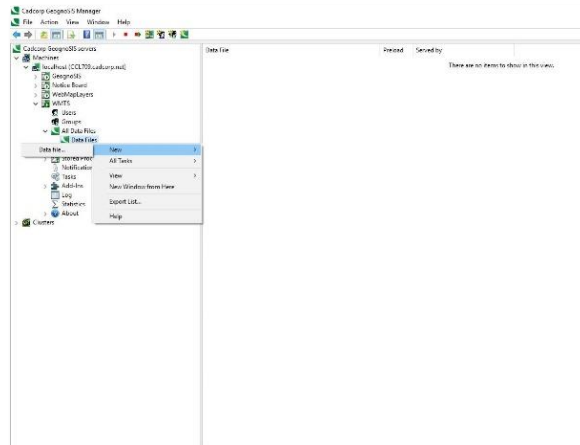
- Set scale thresholds for each layer : Overlays Options > General > Scale Thresholds



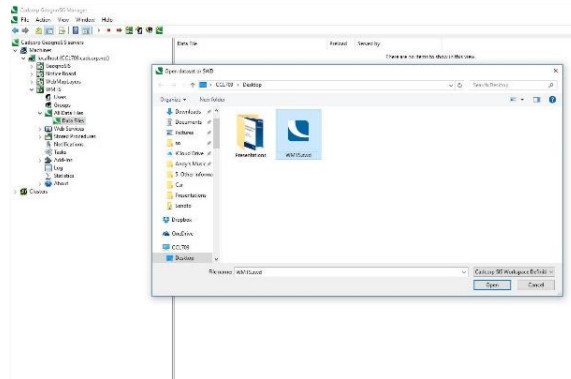
- Zoom out to entirety of Great Britain
- Save **SWD**

4. Within GeognoSIS Manager: Publish the data to a WMTS, using GeognoSIS Manager

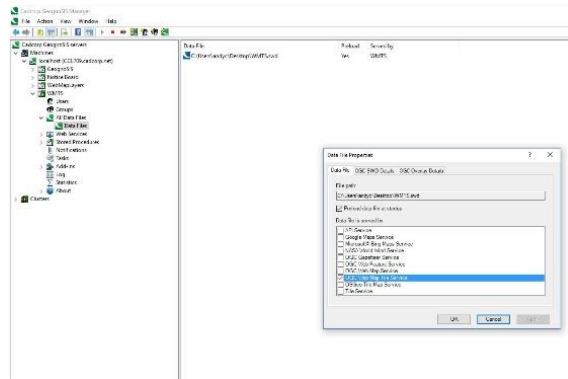
- Right Click on **Data Files** and select **New > Data File**



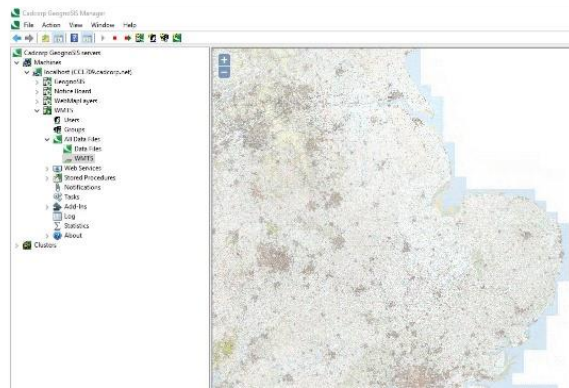
- Select saved **SWD**



- Select preload **data file at start-up** and **OGC WMTS**



- Refresh All **Data Files**
- Preview WMTS in **GeognoSIS Manager**

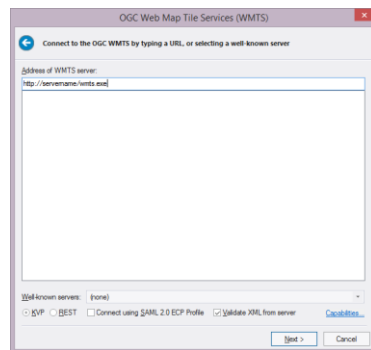


5. Open a new SWD in the Cadcorp SIS desktop

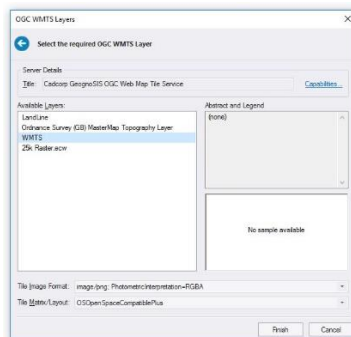
- Select Add **Overlay** > **OGC** > **OGC WMTS** and select server



- Select **WMTS**



- Select Tile Image Format: **RGBA**
- Select Tile Matrix / Layout: **OSOpenSpaceCompatiblePlus**



- Select Finish, and then zoom in and out of the map. Map data will be displayed according to the scale threshold set.

The WMTS can now be used as a base layer within a WMTS client software and web mapping applications.

