

November 2021

Cadcorp Emergency Services Conference

Aims of the conference



Presenters



Gary Randle
Sales Director



Simon Parker
Pre-sales Team Leader



Martin Daly
Technical Director



Gemma Polmear
GIS Analyst



Richard Barker
Ordnance Survey
Technical Relationship Consultant
Consultancy & Technical Services

Agenda

09.30 Welcome and Introductions

09.50 Emergency Services Desktop GIS, Cadcorp

10.20 Update for Emergency Services, Ordnance Survey

10.40 Data Analysis and Modelling, Cadcorp

11.00 Break and networking

Agenda

- 11.30 Emergency Services Applications, Cadcorp
- 11.50 Customer Showcase, Suffolk FRS & Leicestershire FRS
- 12.10 Emergency Services Web Mapping, Cadcorp
- 12.30 Summary and Close

About Cadcorp

UK-based developer of the
Cadcorp Spatial Information
System® - Cadcorp SIS®

Developing GIS since 1995



SIS provides Web, Mobile and
Desktop mapping applications



Focused on software development
and implementation services



Emergency
Services



Government



Housing



Insurance



Infrastructure

2021 (Jan to March)



Leicestershire Fire and Rescue Service introduces FireMap to share incident, water and risk information

Posted on February 10th 2021

Cadcorp SIS WebMap deployed as self-service, corporate web mapping system



Cadcorp SIS 9 service release widens access to addressing

Posted on March 15th 2021

Geocoding allows search by UPRN and USRN
Press Release, Stevenage, UK, 15th March 2021



Workload Modelling Analysis Service

Posted on March 15th 2021

Cadcorp is helping UK fire services work out their next move

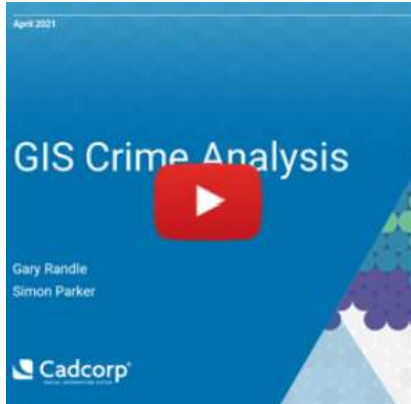


WEBINAR: GIS and Web Mapping Cloud Migration

Posted on March 23rd 2021

A webinar on what should be considered before embarking on a GIS cloud migration

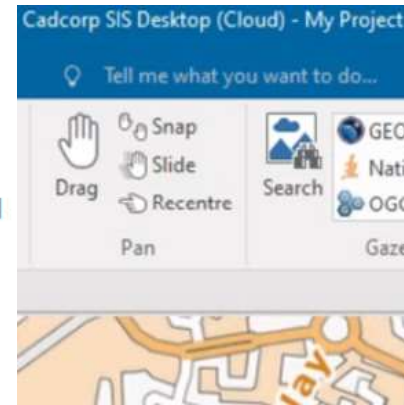
2021 (April to June)



WEBINAR: GIS Crime Analysis

Posted on April 27th 2021

A webinar on how Police Forces and Local Authorities are using the latest GIS techniques to tackle crime and antisocial behaviour



Cloud migration path for Cadcorp SIS Desktop

Posted on May 31st 2021

Cadcorp is offering existing customers the option to transition their on-premise desktop GIS to the cloud



Devon and Somerset Fire and Rescue Service purchase GIS modelling software and services from Cadcorp

Posted on May 19th 2021

GIS and specialist modelling software enables fire service to improve workload management and risk planning



Northamptonshire Fire and Rescue Service adopts GIS software for risk analysis

Posted on June 14th 2021

Cadcorp SIS Desktop, Workload Modeller and Risk Modeller selected for fire service resource and risk planning

2021 (June to Nov)



Staffordshire Fire and Rescue Service combines GIS with workload modelling and risk analysis

Posted on June 28th 2021

Cadcorp Workload Modeller and Risk Modeller selected alongside Cadcorp SIS Desktop



Cadcorp expands fire service modelling expertise

Posted on September 30th 2021

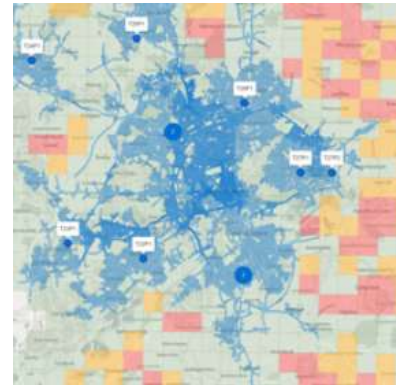
Fire services benefit from independently performed risk and workload modelling consultancy service



WEBINAR: 5 reasons for a GIS health-check

Posted on November 16th 2021

A webinar on how to maximise your return on investment and shape your future GIS strategy with an implementation review



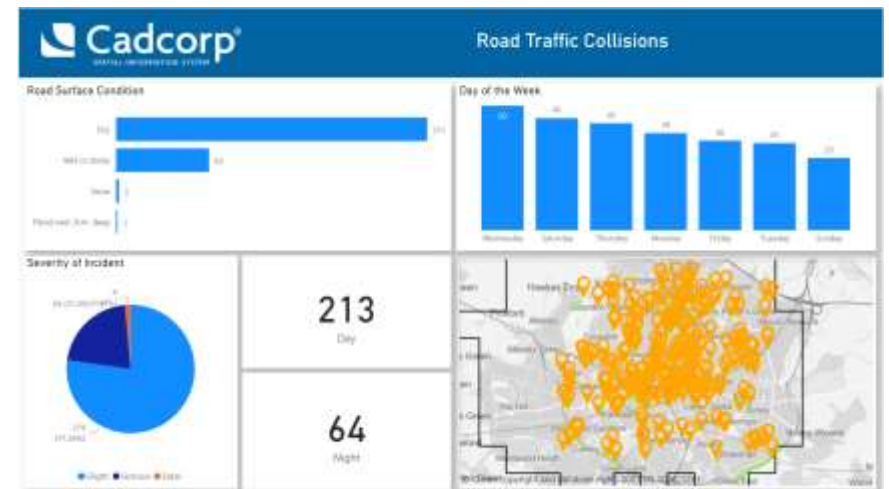
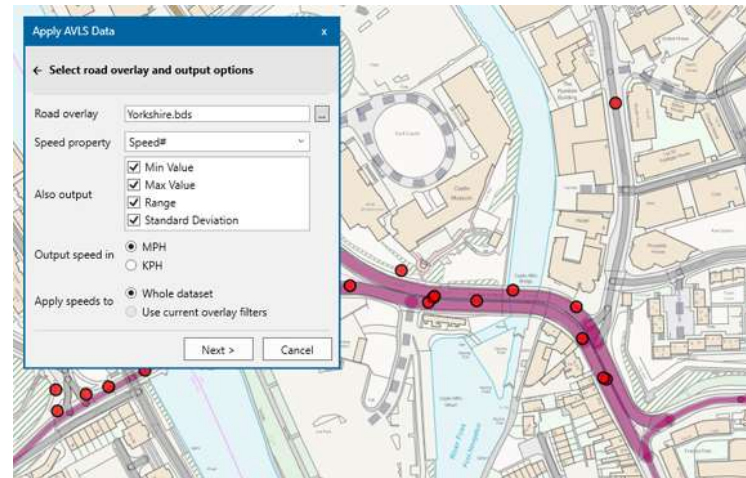
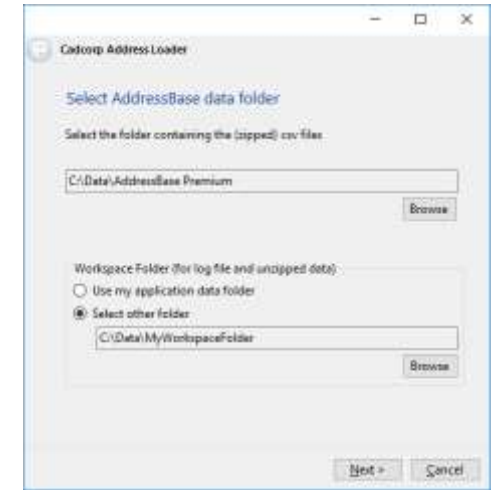
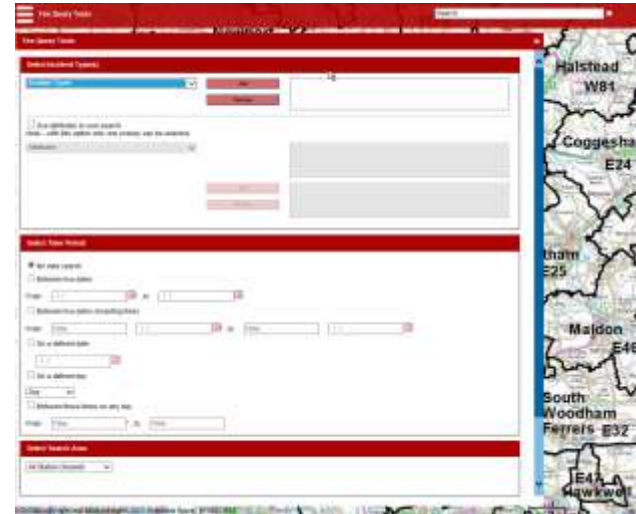
Cadcorp launches dynamic cover application for Emergency Services

Posted on November 23rd 2021

Cover Modeller allows control room personnel to evaluate the impact of control room cover moves on overall risk and response cover

Emergency Services Applications

Gary Randle and Simon Parker

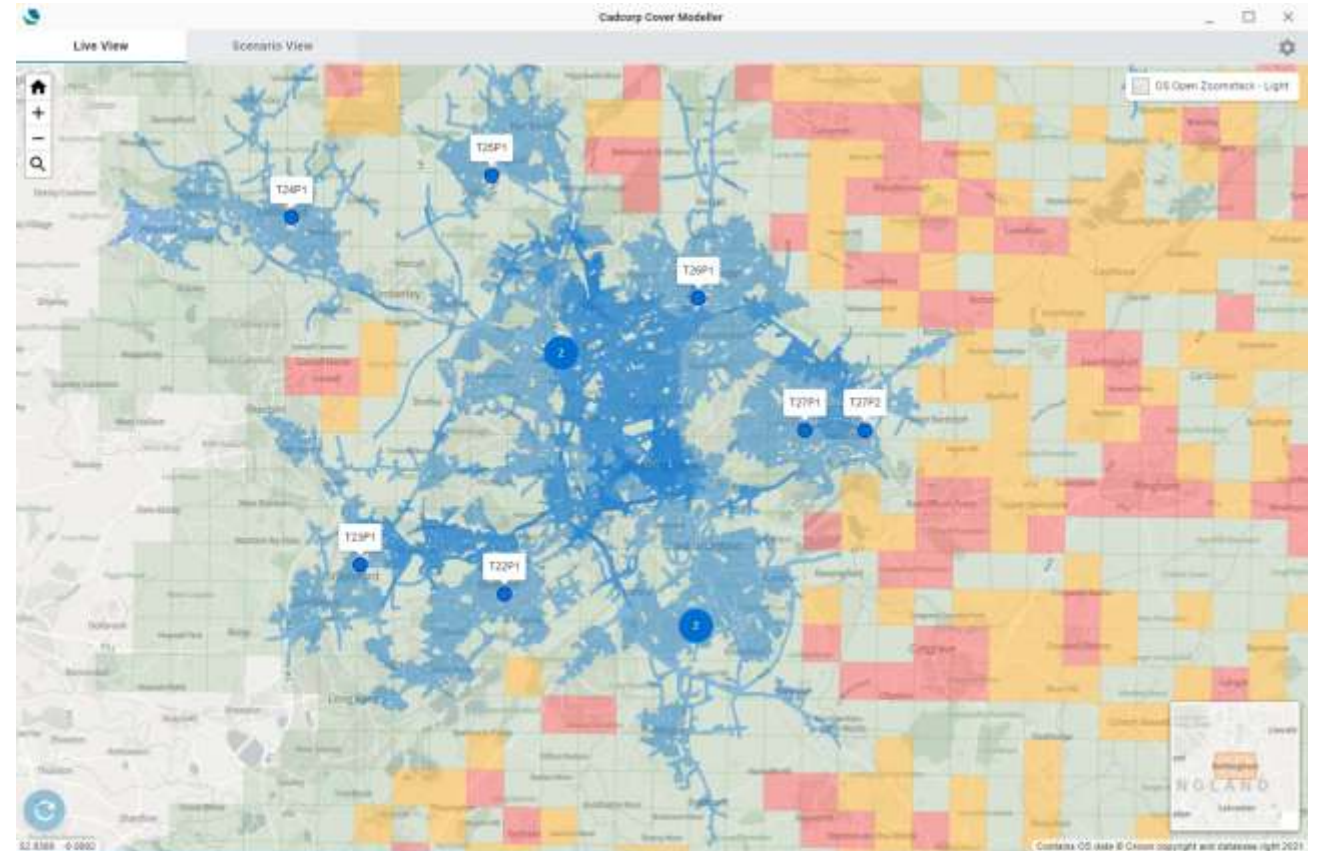


Cover Modeller – Released TODAY!!

View live vehicle locations and evaluate the impact of cover moves on risk and response cover

Cover Modeller includes:

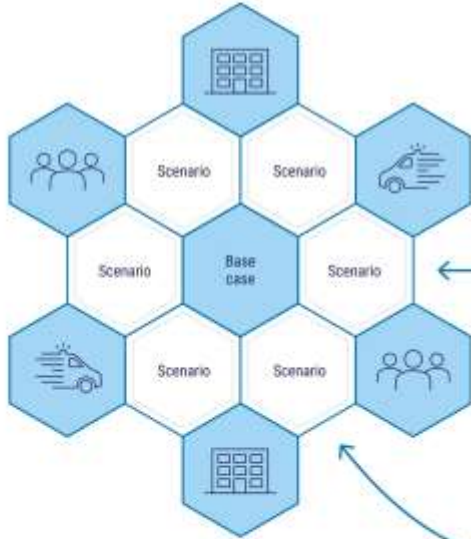
- Live vehicle locations
- Isochrones
- Risk maps
- Live and Scenario View
- Cover Moves



Strategic Planning



— **Analyse** the impact of demand or resource changes on operational performance



Risk Profiling



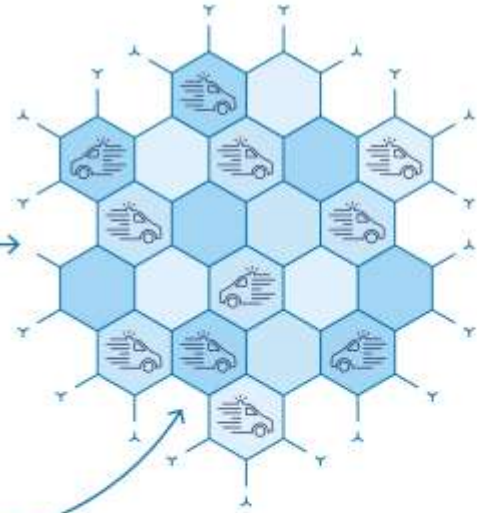
— **Aggregate** a range of risk factors to generate a combined risk map



Dynamic Cover



— **Visualise** live vehicle locations and evaluate the impact of control room cover moves on risk and response cover



t. 01438 747 996 | e. gary.randle@cadcorp.com | w. cadcorp.com