

# Fire Service Analysis Workshop

22<sup>nd</sup> March 2018

# Aims of the workshop



# Agenda

10:00	Welcome, Introductions and Update
10:20	Royal Berkshire Fire and Rescue Service Durham and Darlington Fire and Rescue Service West Yorkshire Fire and Rescue Service
11:30	Coffee
12:00	Fire Service Analysis using Cadcorp SIS Desktop, Cadcorp
12:30	Modelling as a Service, Cadcorp
12:50	Lunch
13:50	Identifying Commercial Fire Risk, Experian
14:10	Risk Modelling, Cadcorp
14:30	Sharing Fire Service Analysis, Cadcorp
15:00	Summary and Close

---



**UPDATE**

---

# Fire Service Projects

Date	Project
April 17	Workload Modeller Report at <b>Hertfordshire</b>
June 17	Risk Modeller at <b>Cambridgeshire</b>
August 17	Web Mapping Upgrade at <b>Royal Berkshire</b>
Sep 17	Cadcorp 3TC IRS Link at <b>Leicestershire</b>
Dec 17	Risk Modeller at <b>Buckinghamshire</b>
Feb 18	Desktop GIS, Risk Modeller and Workload Modeller at <b>Humberside</b>
Feb 18	Desktop GIS, Risk Modeller and Workload Modeller at <b>Lincolnshire</b>
Feb 18	Workload Modeller at <b>South Yorkshire</b>
March 18	Workload Modeller Report at <b>Oxfordshire</b>
March 18	Workload Modeller QA Report at <b>Surrey</b>

---

# Modelling as a Service

## Workload Modelling Analysis Service

Cadcorp are helping UK fire services work out their next move

Share >    

Following demand from UK fire services Cadcorp is pleased to extend the services we offer. In addition to providing software, support and consultancy to allow customers to perform their own analysis, Cadcorp now provides an option to independently perform modelling on behalf of the customer.

A significant number of UK fire services are using Cadcorp Map Modeller and Workload Modeller to assist in the production of their Integrated Risk Management Plans. Map Modeller is used to map resources and demand and perform spatial analysis. Examples may include thematic maps, hotspot maps



and travel time analysis. Workload Modeller builds upon this by allowing fire services to make changes to the resources available and model the impact of those changes on operational performance.

While fire services can perform this analysis themselves, a number of Fire Services are now choosing the independent consultancy service from Cadcorp. Some of the advantages of this approach include:

- **Resource** - the majority of fire services run modelling analysis on a relatively infrequent basis and may not have the internal analyst resource available
- **Time** - when fire services do have internal resources available, due to the existing commitments of their analysts, they may find that the modelling report cannot be produced within the required timescale
- **Cost** - outsourcing modelling has the potential to save fire services revenue in other areas. For example in hardware, software licences and training
- **Validation** - Cadcorp Workload Modelling Analysis provides fire services with the external validation that may be required as part of the public consultation process

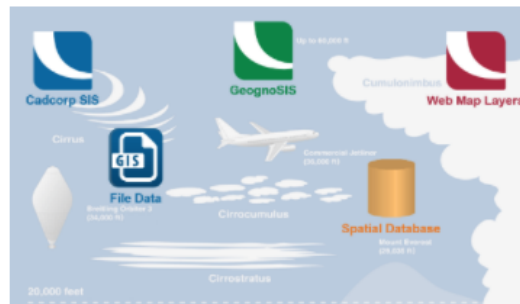
# Cloud Migration

## Cloud migration path for Cadcorp web mapping

Cadcorp is offering existing customers the option to transition on-premise web mapping software to the cloud

*Press Release, Stevenage, UK, 17th October 2017*

Share >



Cloud hosting technology is being rapidly adopted and Cadcorp is pleased to announce a cloud migration path. Customers can migrate their existing maintained licences into a Cadcorp cloud hosted and managed environment.

There a number of benefits to hosting web mapping in the cloud and Cadcorp is offering packages that are adaptable to each organisation's IT architecture and requirements.

### Benefits of cloud hosted web mapping

Includes hardware and software upgrades together with map updates	Interface with other cloud environments, onsite systems and databases
Server administration and monitoring by Cadcorp	Cadcorp customer support service, backed by Microsoft Azure SLA
Full Cadcorp product administration available	Resilience, back up and disaster recovery options available



# Risk Modeller

Home / News & Events / Cadcorp launches Risk Modeller for Fire & Rescue Services

## Cadcorp launches Risk Modeller for Fire & Rescue Services

Cadcorp has released a new application to help fire services determine aggregate risk. Risk Modeller provides analytical functionality for determining risk by combining the effects of spatial and attribute data from a range of different layers.

Share >

A significant number of UK Fire & Rescue Services (FRS) are currently using Cadcorp SIS Map Modeller GIS software and Workload Modeller to assist in the production of Integrated Risk Management Plans (IRMP). Following a customer consultation exercise, the requirement for an additional application for locating, assessing and analysing risk coverage was identified. Risk Modeller was subsequently developed.

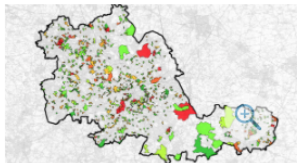
Risk Modeller can be used to create multiple risk maps based on historical data, projected data and demographics as well as changes to population distribution and transport links. It can be used to test the impact of various risk factors, the options include:

### Attribute Risk

Using unlimited attributes from a layer, weightings can be assigned to different risk factors, which are then combined to produce an aggregate risk figure. Attributes such as demographic, census, economic and population data can be used. These queries can be saved, loaded and recalled as json files.

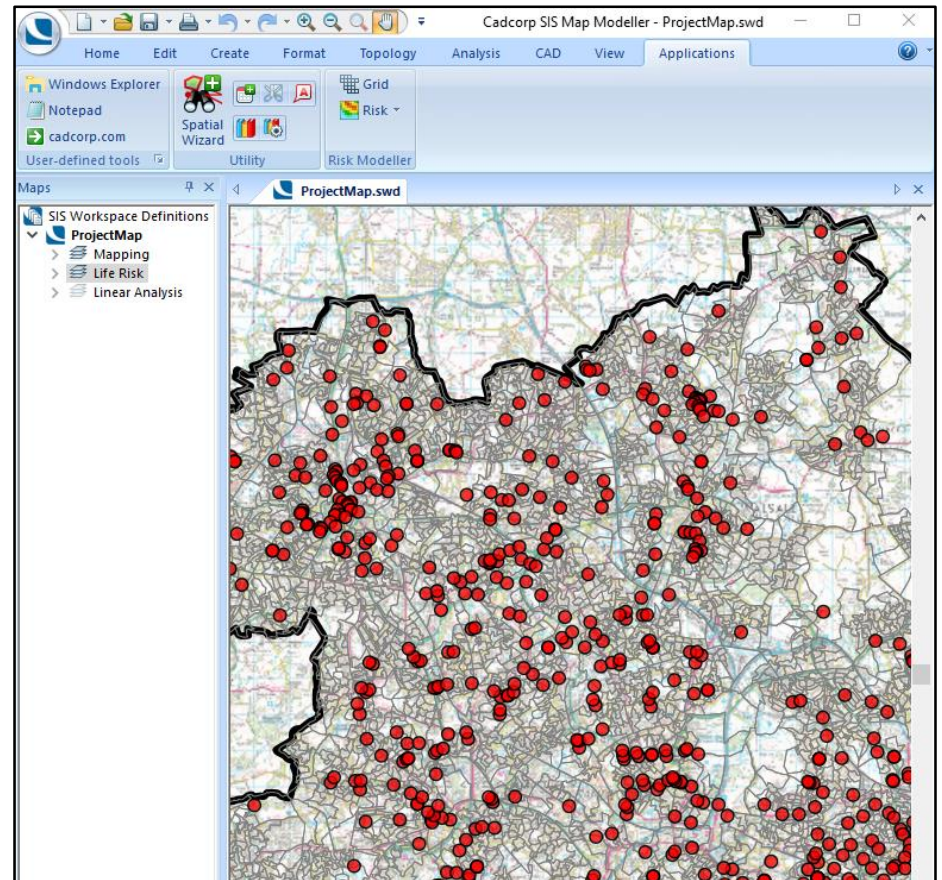
### Quantitative Risk

This technique aggregates point data according to the boundary features they fall within. The point data can be counted using geographic features, an automatically created grid or using an attribute for greater granularity.



### Life Risk

Life risk, fatalities, casualties and rescues are calculated, weighted and combined to produce a single life risk value against geographic features or an automatically created grid.



# SIS 9 Beta



# Customer Presentations



**ROYAL BERKSHIRE**  
**FIRE AND RESCUE SERVICE**

County Durham and Darlington  
**Fire and Rescue Service**



West Yorkshire  
Fire & Rescue Service

---