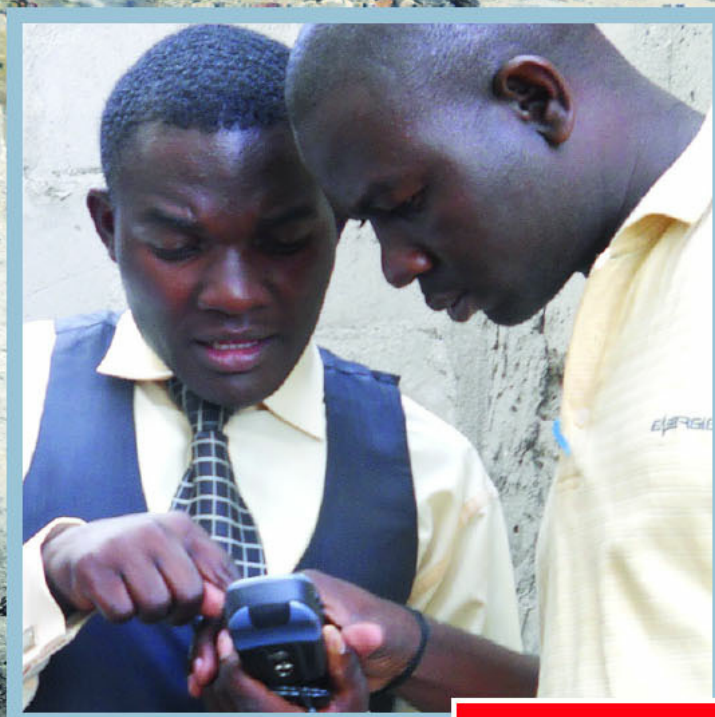


# GIS Professional

issue 43 : December 2011

...joining the geography jigsaw



No government 2.0? Crowd sourcing can help

GeoPlace happens in Nottingham

Open Data: what could possibly go wrong?

Crime mapping makes the difference

Time for space: G-STEP arrives

MasterMap: OS spells out the future

GI boosts Surrey Heath's recycling

+ News | People | Products & Services | GiSPro's columnists



collected on alternate weeks. Wherever possible, changes were to result in minimum disruption (e.g. avoiding collection day changes).

### The solution

Oblique aerial photographs were used to look at building frontages to make initial assessments regarding wheelie bin suitability (without officers having to make costly and numerous site inspections). An initial 'waste collection points' dataset was generated from the council's Local Land and Property Gazetteer (LLPG) and mapped against Ordnance Survey data (in their Cadcorp geographical information system) in order to provide an excellent visual image of the current contract areas. This dataset contains some 35,600 waste collection points and is used widely across the authority.

A completely new fleet of collection vehicles was provided by the contractor to support the move to

## GI boosts recycling rate to 65%

Many organisations are already aware of the savings and benefits that can come from applying geographical information (GI). One local authority has become one of the country's top recyclers by using GI to support the delivery of a modernised and efficient waste collection service. In just a year Surrey Heath Borough Council managed to more than double its recycling rate.

IN 2009, SURREY HEATH Borough Council needed to renew and modernise its waste collection contract: moving from weekly black sack collection to fortnightly alternating wheelie bin collection. The majority of residents were to receive a grey waste wheelie bin, a green recycling wheelie bin and an indoor and outdoor food caddy. Food waste was to be collected weekly and waste and recycling

bins from bags and the GIS and mapping system was used extensively to calculate the new crew allocation routes.

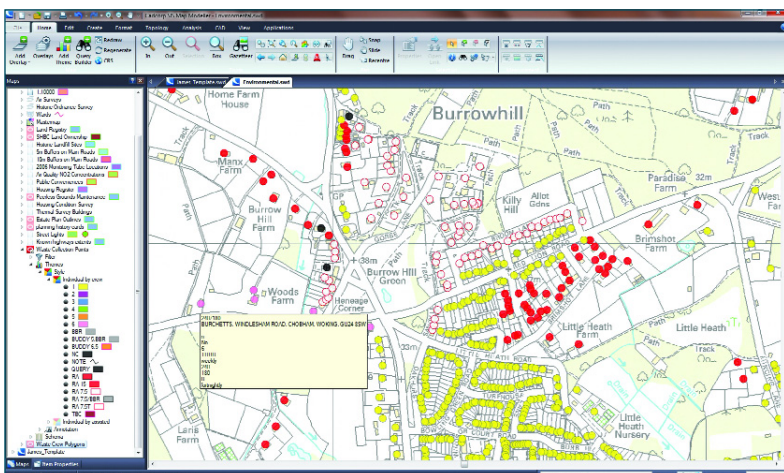
There is general agreement that, due to current low level of resource available, the contract build-up and switch to wheelie bins (and the subsequent huge increase in recycling collection rates) could not have been done without the aid of GIS and Ordnance Survey mapping data.

### The benefits

- Recycling collection rate has moved from 30% to 65% in just one year.
- New collection vehicles provided by the contractor.
- Improved crew allocations/increased efficiency of service.
- Contact centre staff able to answer enquiries using waste collection points data.
- Data supports 'My Surrey Heath' – allowing citizens to self-serve waste collection information from the Internet without having to contact the authority.
- Authority shortlisted for an award at the National Recycling Awards event (in the 'Local Authority Target Success' category).

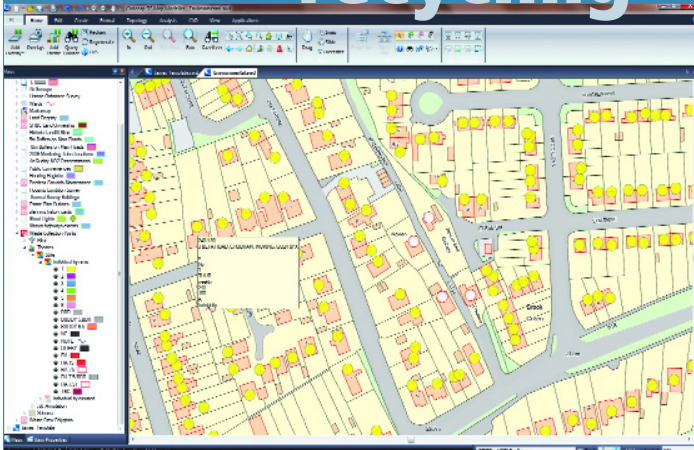
### Return on investment

'Our new waste collection and recycling system



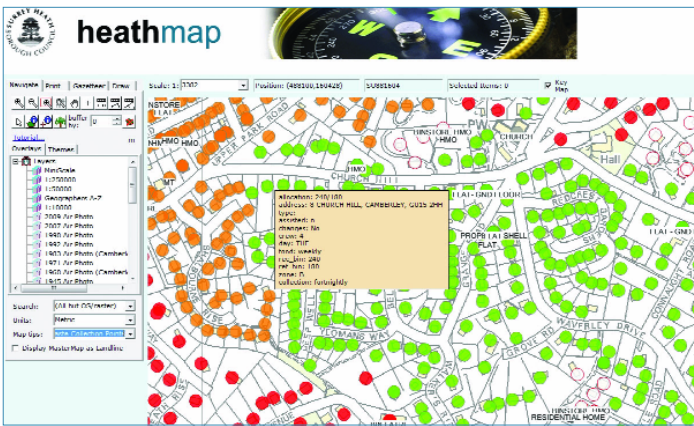
Above: Different waste collection crews seen over 1:10 000 scale Ordnance Survey mapping.

# case study recycling



**Detailed property level waste collection data over OS MasterMap.**

involved the whole organisation working together towards a common goal' explains **Chas Bradfield**, deputy chief executive, Surrey Heath Borough Council. 'The GIS component of the project was critical to us being able to both plan for and implement new collection systems and also to field customer enquires during the initial stages of implementation. It enabled a very efficient use of staff time and we were able to target our effort effectively as a result. The outcome speaks for itself' concludes Bradfield. 'We are one of the top recyclers in the country and our councillors and community are very happy with the scheme!'



**Heathmap intranet mapping provides waste collection data to the Council's contact centre.**

**Data products used:**

- OS MasterMap® Topography Layer
- OS Street View®
- OS VectorMap® Local
- Oblique aerial photography
- Surrey Heath's Local Land and Property Gazetteer and the Unique Property Reference Number (UPRN)
- 1:250 000 Scale Colour Raster

**Acknowledgements to Surrey Heath Borough Council for all images.**

Published with the permission of the Editor and Publisher of GIS Professional  
[www.gisprofessional.co.uk](http://www.gisprofessional.co.uk)

For more information, contact:



**PV Publications Ltd**, publishers of *GIS Professional* magazine.

**Tel:** +44 (0)1438 352617

**Email:** [editor@pvpubs.demon.co.uk](mailto:editor@pvpubs.demon.co.uk)

**[www.pvpubs.com](http://www.pvpubs.com)**