

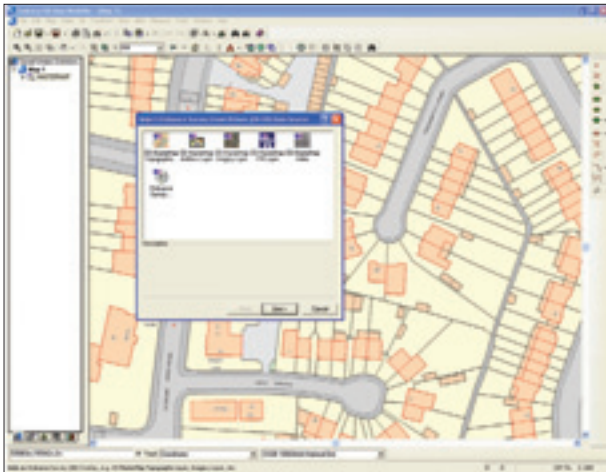
53°09'46"N 0°27'51"W

Cadcorp SIS[®] OS MasterMap[®] Management

Cadcorp SIS[®] – Spatial Information System[®] offers users a scalable set of utilities for managing OS MasterMap Topography Layer, Integrated Transport Network[™] (ITN) Layer, Address Layer 2 and Imagery Layer data, to suit their own particular requirements and work environment.

Delivered with Cadcorp SIS Map Modeller at no extra cost, the Cadcorp SIS OS MasterMap Manager supports Microsoft Access MDB files, OS MasterMap Database (“ODB”) files, Microsoft SQL Server 2000 and Microsoft SQL Server 2008, PostGIS, and Oracle 10g or 11g databases. For less demanding applications, Cadcorp SIS also provides the ability, as standard, to read and display native OS MasterMap data, on-the-fly, as ‘flat files’.

The Cadcorp SIS OS MasterMap Manager performs initial loads of OS MasterMap Topography Layer data directly from Ordnance Survey supplied data without translation, and also manages change-only updates.



The Cadcorp SIS OS MasterMap ITN Manager loads initial supply of OS MasterMap ITN Layer data including Road Routing Information (RRI) into a Cadcorp topological file format, for further route-finding, analysis and display.

The Cadcorp SIS OS MasterMap Address Layer 2 Manager loads initial supply of OS MasterMap Address Layer 2 data into Microsoft Access MDB files, OS MasterMap Database (“ODB”) files, Microsoft SQL Server 2000 and Microsoft SQL Server 2008, PostGIS, and Oracle 10g or 11g databases for gazetteer, query and display.

OS MasterMap Imagery Layer data can be loaded directly from Ordnance Survey supplied data.

Cadcorp SIS – OS MasterMap for the desktop

For users simply interested in taking small amounts of OS MasterMap data into a system, Cadcorp SIS provides the ability to read and display OS MasterMap direct from the native Geography Markup Language (GML) data files. Using this method, OS MasterMap is loaded into system memory and can then be viewed, queried, manipulated and printed.

OS MasterMap Database (“ODB”)

An OS MasterMap Database (“ODB”) is a spatial database encapsulated in a single file that can handle anything from a single OS MasterMap chunk, right up to national coverage. ODB files are supported by the Cadcorp SIS OS MasterMap Manager product and are of benefit to users who want to use large volumes of OS MasterMap data without having to invest in database server technology and management resources, and for remote or mobile users.

ODB files also extend OS MasterMap management options for the small and medium-sized enterprise or local authority that does not want to invest immediately in a relational database management server (RDBMS), or to be constrained by the 2 Gb file size limit associated with Microsoft Access 2000.

Cadcorp SIS – OS MasterMap for the enterprise

Enterprise users of the Cadcorp SIS product family are able to select from a scalable range of RDBMS systems for managing OS MasterMap, including Microsoft SQL Server 2000 (including the free "SQL Server 2000 Desktop Engine"), Microsoft SQL Server 2008, PostGIS, and Oracle 10g or 11g databases (including the free "Oracle Database Express Edition").

The Cadcorp SIS OS MasterMap Manager offers the following features and benefits for the user:

- Swift performance
- Theme Selection
- Filter Creation
- Easy-to-use Wizard
- Batch automation
- In-process monitoring and reporting
- Change only update
- Can be used by DBAs and GIS professionals alike
- Removes the need for middleware
- Delivered with Map Modeller at no extra cost

The RDBMS approach allows for the management of large volumes of OS MasterMap data in a multi-user environment. Cadcorp SIS also supports multi-user direct read and write to Microsoft SQL Server 2008, PostGIS and to Oracle 10g or 11g databases without the need for additional middleware.

Cadcorp SIS OS MasterMap ITN Manager

The Cadcorp SIS OS MasterMap ITN Manager is a standalone application designed to load initial supply of OS MasterMap ITN Layer data into a link and node network in a Cadcorp file format, maintaining the topological link/node relationships.



Delivered with Cadcorp SIS Map Modeller at no extra cost, the application provides the user with options to prepare the data for use with Cadcorp SIS route-finding tools.

These options include:

- Applying RRI to the network, e.g. no entry, one way, mandatory turn etc
- To globally apply 'no U-Turns' to the network to prevent route-finding from doubling back down a link
- Transferring road names onto the network so that each link contains road name information

The Cadcorp SIS OS MasterMap ITN Manager is intended to support route planning applications across a wide range of sectors such as planning, monitoring and analysis, asset management, transport, logistics and distribution.

OS MasterMap Interoperability

Once loaded into an RDBMS, MDB or ODB file, OS MasterMap data is accessible from the entire Cadcorp SIS product family, including Cadcorp GeognoSIS™ which is certified compliant for both Open Geospatial Consortium Inc.® (OGC®) Web Map Service (WMS) and Web Feature Service (WFS). OS MasterMap data can be served to any third party GIS that contains an OGC W*S client implementation, thus maximising interoperability and data sharing between and within organisations.

Cadcorp SIS Map Browser is a free application available from cadcorp.com to browse geographic data including OS MasterMap data, served by OGC W*S services.

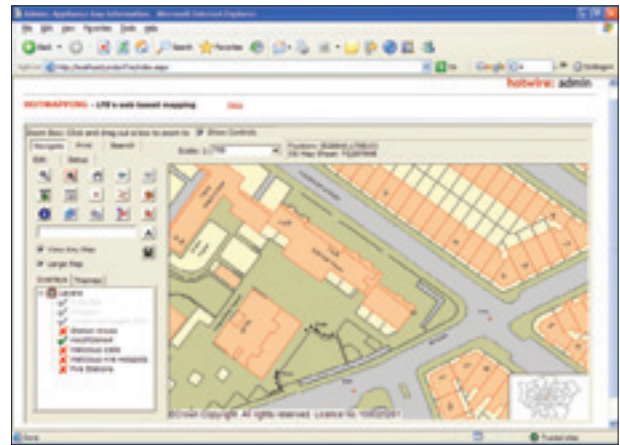


Image courtesy of London Fire & Emergency planning Authority

In order to further enhance interoperability, the GeognoSIS WFS server implementation serves any OS MasterMap Topography Layer data loaded using the Cadcorp SIS OS MasterMap Manager using the native GML Application Schema – arguably the most widely supported GML Application Schema in the world.



Cadcorp | Computer Aided Development Corporation Ltd
Sterling Court, Norton Road, Stevenage,
Hertfordshire. SG1 2JY. UK
T 01438 747996 | F 01438 747997

Cadcorp Inc. | North America
1420 Boston-Providence Hwy, Suite #257,
Norwood, MA 02062 USA
T +1 (781) 551 2727 | F +1 (781) 551 3404

Visit www.cadcorp.com | Email cadcorp@cadcorp.com
Cadcorp is a trading name of Computer Aided
Development Corporation Ltd