



53°42'42"N 3°02'16"W

Cadcorp SIS[®] GIS for Emergency Services



Cadcorp is a developer of industry leading GIS software. We have solid experience of providing digital mapping and geospatial management solutions to a wide variety of organisations around the world.



Cadcorp® in Emergency Services

It is widely recognised that the application of geographical information systems (GIS) increases the capability and effectiveness of the emergency services to respond in an emergency situation. Modern emergency services, both in planning and operational support, rely on accurate and timely information about the location of incidents, crimes or assets, often from dispersed sources of data. The ability to access and process spatial information quickly, from multiple sources, and to give visual feedback, is crucial to planning and operational effectiveness.

Increasingly, emergency services are subject to government initiatives to reform and modernise public services. For example, UK fire and rescue services are required to produce an Integrated Risk Management Plan (IRMP). This involves the identification of those areas where improvements to community safety can be made without compromising on emergency response times. Furthermore, legislation such as The Civil Contingencies Act 2004 in the UK places responsibilities upon category one and two emergency 'responder' organisations; for example the emergency services and local authorities. Here GIS has a significant role to play in assisting organisations fulfil their responsibilities and, in particular, carrying out their duty to share information.

Cadcorp SIS® digital mapping and GIS software is used by police, fire and ambulance services throughout the world for a diverse set of planning and operational support applications including:

- Digital map management and production
e.g. OS MasterMap® in Great Britain
- Integrated Risk Management Planning (IRMP)
- Dynamic incident analysis
- Sharing information via web-based GIS
- Community fire safety
- Emergency planning
- Mobile data logging and asset management

Cadcorp UK Fire Service customers include London Fire and Emergency Planning Authority, Royal Berkshire Fire and Rescue Service, East Sussex Fire Brigade, West Midlands Fire Service, Nottinghamshire Fire and Rescue Service and Derbyshire Fire and Rescue Service. Cadcorp partners such as MIS, Steria and SSI integrate the Cadcorp SIS ActiveX Control to provide embedded GIS functionality to their emergency service customers.

Internationally through its distributors, Cadcorp has also achieved considerable success within the police and security sectors, particularly in Japan and Spain. Informatix Inc., Cadcorp's Japanese distributor has extensive experience of integrating the Cadcorp SIS Control within applications developed for police authority customers by various systems integrator partners.

Key Partners & Accreditations



Cadcorp SIS®

Enabling e-Emergency Services

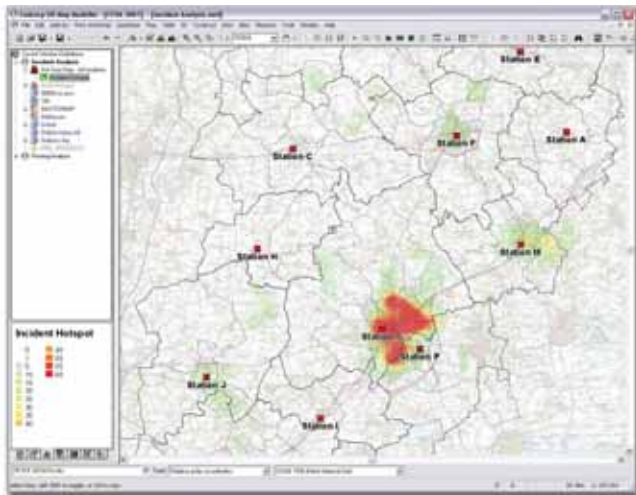
The Cadcorp SIS product family is an integrated and complete family of desktop, web, developer and mobile GIS products. Cadcorp SIS enables emergency services to:

- Manage definitive base mapping and business spatial data within industry standard databases
- Identify links and trends in geographic data via desktop GIS analysis e.g. time travel matrix and isochrone analysis
- Distribute spatial information via corporate intranets to support informed decision making
- Integrate spatial information with back office business systems and command centres
- Distribute interoperable Open Geospatial Consortium Inc.® (OGC®) compliant web services to partner organisations
- Accurately record asset, crime or incident information in the field using mobile Tablet and Pocket PCs
- Automatically capture asset, crime or incident images in their geographic location using GPS-enabled digital cameras

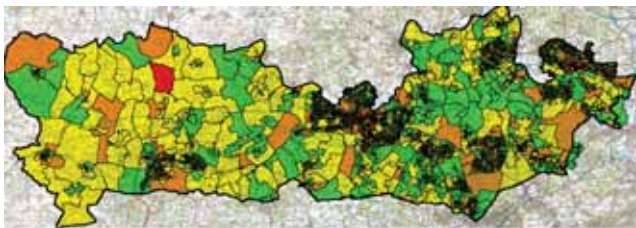
Customers and Partners

Royal Berkshire Fire and Rescue Service

To enable it to meet the requirements of the IRMP, the Royal Berkshire Fire and Rescue Service (RBFRS) uses OS MasterMap data alongside its own data in a GIS, giving it a more detailed and focused analysis of incidents. Cadcorp SIS helps to underpin detailed analyses of previous incidents and to assess potential fire risks, for more effective and efficient allocation of resources.



Some of the benefits that the GIS is bringing to RBFRS include the ability to develop community safety solutions while allocating resources to high-risk areas, to pinpoint incident scenes to a greater degree of accuracy, to identify incident trends and patterns using six years' of archive data, and to analyse data according to actual, potential and cover risks.



"Identifying the pattern and nature of emergency incidents is essential to thinking clearly on how to tackle them. Cadcorp SIS, by combining Ordnance Survey's and our own data, helps us determine our actions and evaluate how successful they are", says Iain Cox, chief fire officer, RBFRS.

mis Emergency Systems

Cadcorp partner mis Emergency Systems Ltd has developed its ALERT C3 system to take full advantage of the embedded GIS facility of the Cadcorp SIS ActiveX Control to bring real time benefits to the latest ambulance command, control & communication (C3) systems.

ALERT C3 has been selected by, and implemented at, many ambulance services in the UK and Ireland. These include Scottish Ambulance Service (3 regional control centres), South West Ambulance Service, Yorkshire Ambulance Service and more recently at the Northern Ireland Ambulance Service and the East Midlands Ambulance Service at the new Horizon Place control centre.

The benefits of integrated GIS ensure that the Control Centre is fully aware of where resources are currently located and which resource will be quickest to respond to life threatening calls. The GIS components of the Command and Control systems also help to ensure that the actual location of the incident is clearly identified as quickly and accurately as possible.



"The decision to bring GIS into our own development environment through the use of Cadcorp's application development tools has removed the limitations and restrictions that we had previously experienced when trying to interface our command and control systems with third-party GIS products from other vendors," says John Melia, managing director, mis Emergency Systems Ltd.



Cadcorp | Computer Aided Development Corporation Limited
Sterling Court, Norton Road, Stevenage, Hertfordshire. SG1 2JY. UK
T 01438 747996 | F 01438 747997

Visit www.cadcorp.com | Email cadcorp@cadcorp.com
Cadcorp is a trading name of Computer Aided Development Corporation Ltd



Cadcorp, Cadcorp SIS, Spatial Information System, SIS, mSIS, apSIS, Powermap, MapTips, GeognoSIS, Map Browser, Map Reader, Map Viewer, Map Editor, Map Modeller and Roamer are trademarks, registered trademarks, or service marks of Computer Aided Development Corporation Limited (Cadcorp) in the UK, the European Community or certain other jurisdictions. Not all Cadcorp trademarks may be indicated here. Other companies and products mentioned may be trademarks, registered trademarks or service marks of their respective trademark owners.

Certain digital data images are reproduced from Ordnance Survey GB, with permission of Her Majesty's Stationery Office © Crown Copyright.