



52°44'58"N 0°24'06"E

# Cadcorp NLPG Data Loader

**Cadcorp's NLPG Data Loader is a simple but powerful application which takes Gazetteer data and builds a database with a structure to match the NLPG model.**

By holding address information in a structured database, it makes it much easier to present information on people, properties, and places in any GIS and mapping system that can read the database directly.

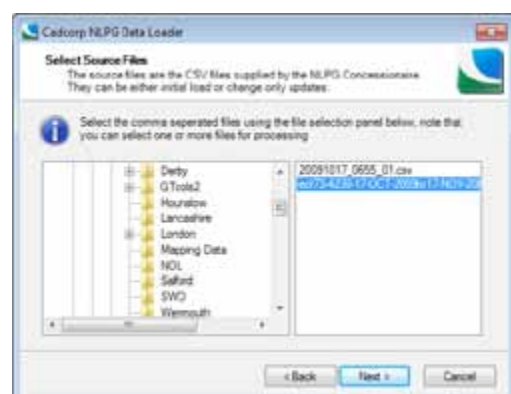
Cadcorp's NLPG Data Loader provides support for Oracle, SQL Server and Access databases.

**The tool operates through a simple-to-use wizard interface.**

- Select as source files the CSV files in Data Transfer format 7.1. The application will automatically identify whether this is an initial data load, or a change-only update.
- Specify the destination database: Oracle, SQL Server or MS Access. The application will automatically create each address as a spatial object in your database e.g. in SDO\_Geometry if your destination is Oracle.

The application creates a database view linking the data tables and makes this view available for gazetteering purposes. The user controls the frequency of updating the database.

With the data being held in a structured database, any updates that are applied to the data will appear automatically in Cadcorp SIS as a dynamic overlay.



**Cadcorp** | Computer Aided Development Corporation Ltd  
Sterling Court, Norton Road, Stevenage, Hertfordshire.  
SG1 2JY. UK

T 01438 747996 | F 01438 747997

Visit [www.cadcorp.com](http://www.cadcorp.com) | Email [cadcorp@cadcorp.com](mailto:cadcorp@cadcorp.com)  
Cadcorp is a trading name of Computer Aided Development Corporation Ltd