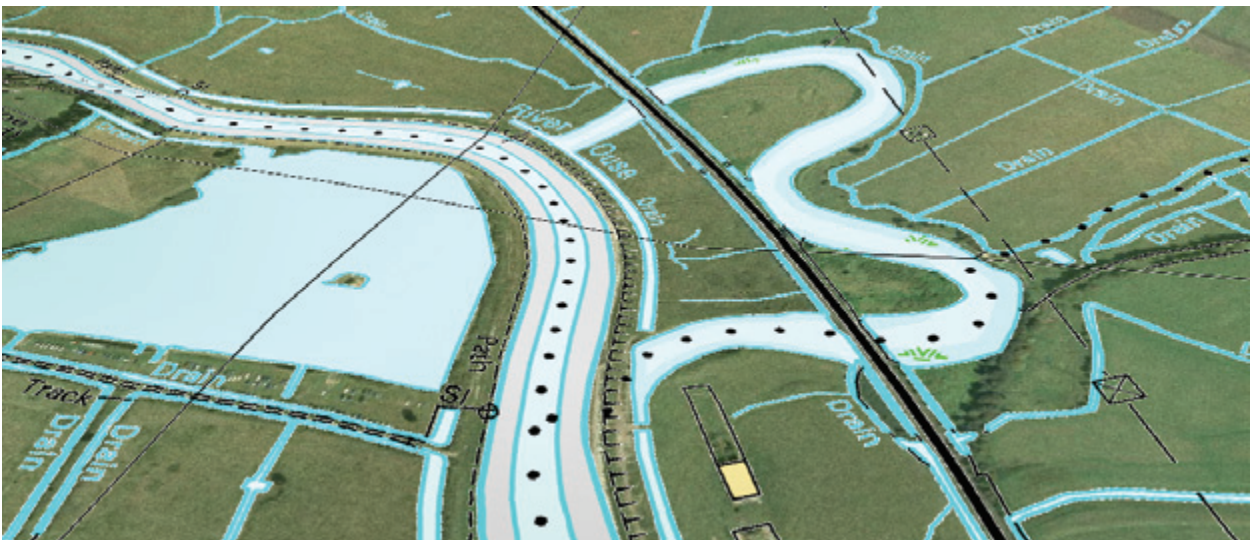


52°28'21"N 0°05'57"W

Cadcorp and Internal Drainage Boards

Modernising operations with digital mapping

The Flood and Water Management Act 2010 imposes significant new powers and responsibilities on Internal Drainage Boards (IDBs) for flood risk management.



The change is merely the latest in a series of legislative directives which have extended the duties of IDBs beyond water level management to include responsibilities for stewardship of the environment, sustainability, and flood defences.

In the light of extended responsibilities, many IDBs have turned to Cadcorp SIS – Spatial Information Systems - as a means to improve both their efficiency and effectiveness. IDBs are using digital mapping technology to derive the following benefits:

- assuring revenue streams by automating the calculation and collection of drainage rates and levies
- optimising the use of personnel and machinery through better planning and management
- improved accounting through more accurate estimating, tracking, and recording of maintenance work, and more effective asset management
- helping win new revenue streams by providing quotations for engineering and maintenance work for outside bodies
- improving customer service through quicker responses to requests for information, and proactive notifications of flooding or drainage problems
- providing a vehicle for the creation of Biodiversity Action Plans and Water Level Management Plans, and for sharing information with Local Planning Authorities and other agencies

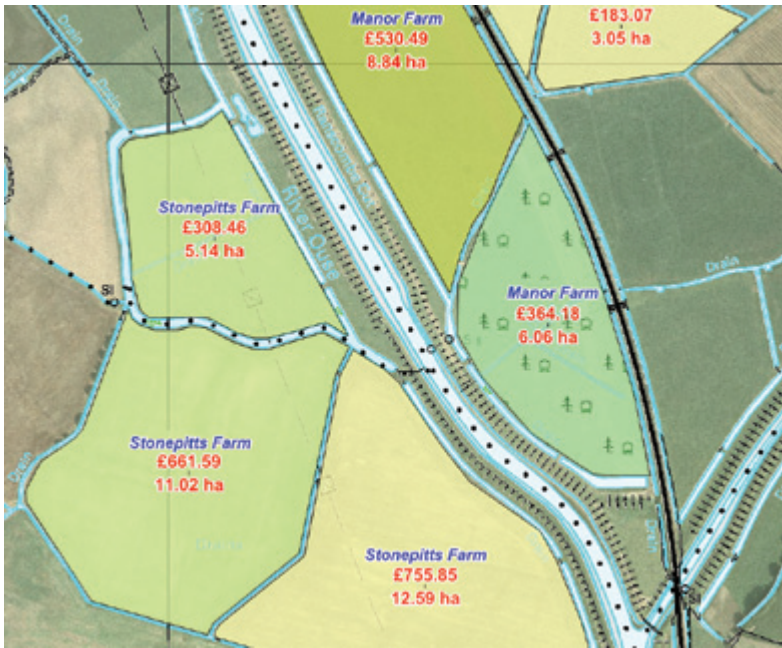


Figure 1

Figure 1 shows drainage channels and field boundaries superimposed over an aerial photograph. The map displayed shows for every field the owner, the spatial extent, and the drainage rates due.

Once mapping data has been stored in a digital format, it is very easy to share that information – within the IDB and externally – either on-line or off-line. In figure 2 and figure 3 we see how maintenance instructions have been shared with field operatives in two ways: as a pdf map which can be printed as hard copy, and as a digital map displayed on a GPS-enabled field data device.

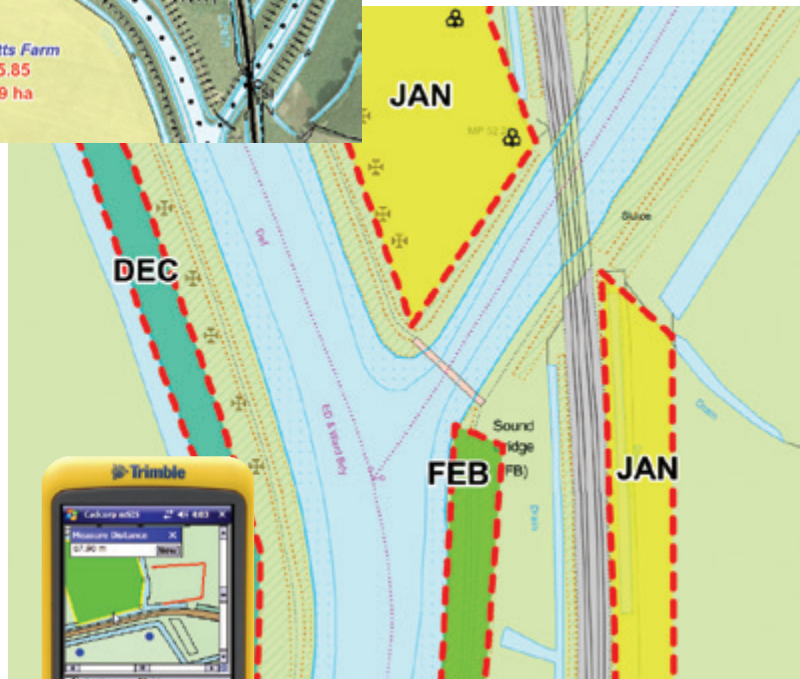


Figure 2

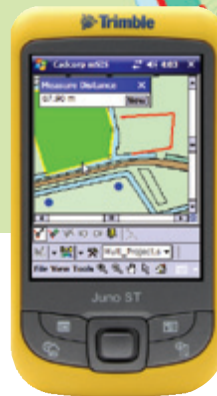


Figure 3

Cadcorp offers a full range of affordable desktop, web, and mobile technologies which help IDBs in all phases of their creation and use of digital map data. For example, the technology allows them to import digital base maps, and to create and edit layers of particular interest. These include drainage ditches, field boundaries, land ownership, pumping stations, sluices, and the boundaries of environmental and recreational areas.

Cadcorp SIS has the ability to read and display over 160 GIS, CAD, graphic and database formats without the need for translation. It is able to read and write CAD plans, and it supports Ordnance Survey data in all its formats. Using Cadcorp SIS it becomes a simple matter to create a GIS database by dragging and dropping map data into a project.

For more information on how Cadcorp SIS can help you automate and modernise your drainage management operations visit www.cadcorp.com, or send an email to sales@cadcorp.com



Cadcorp | Computer Aided Development Corporation Ltd
Sterling Court, Norton Road, Stevenage, Hertfordshire.
SG1 2JY. UK

T 01438 747996 | F 01438 747997

Visit www.cadcorp.com | Email cadcorp@cadcorp.com
Cadcorp is a trading name of Computer Aided Development Corporation Ltd